

ZNF300 Antibody

Subcategory: Rabbit Polyclonal Antibody

Cat. No.: 250541

Unit: 0.1 mg

Description:

ZNF300 (Zinc finger protein 300) has a transcriptional repressor activity. It belongs to the krueppel C2H2-type zinc-finger protein family, and has a KRAB domain. ZNF300 is expressed in heart, skeletal muscle, brain, and testis.

Isotype: Rabbit Ig

Applications: E, IHC, WB

Species Reactivity: H, M, R

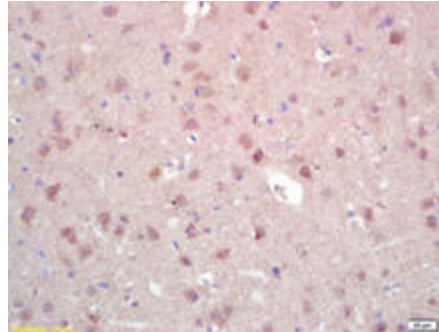
Format: Each vial contains 0.1 mg IgG in 0.1 ml (1 mg/ml) of PBS pH7.4, 25% glycerol, 0.1 mg/ml BSA with 0.09% sodium azide. Antibody was purified by Protein-A and immunogen affinity chromatography.

Alternate Names: ZNF300; Zinc finger protein 300; ZNF300

Accession No.: Q96RE9

Antigen: KLH-conjugated synthetic peptide encompassing a sequence within the N-term region of human ZNF300.

Application Notes: E: 1:500-1:1,000; WB: 1:100-1:500; IHC: 1:100-1:500



ZNF300 staining in rat brain. Formalin-fixed paraffin-embedded rat brain tissue is stained with ZNF300 Antibody (Cat. No. 250541) used at 1:200 dilution.

Storage: Store at -20°C. Minimize freeze-thaw cycles. Product is guaranteed one year from the date of shipment.

For research use only, not for diagnostic or therapeutic procedures.