

ACADM Antibody

Subcategory: Rabbit Polyclonal Antibody

Cat. No.: 251986

Unit: 0.1 mg

Description:

Medium-chain specific acyl-CoA dehydrogenase, mitochondrial (ACADM) catalyzes the following reaction: Acyl-CoA + acceptor = 2,3-dehydroacyl-CoA + reduced acceptor. ACADM is specific for acyl chain lengths of 4 to 16.

Isotype: Rabbit Ig

Applications: E, WB

Species Reactivity: H, M, R

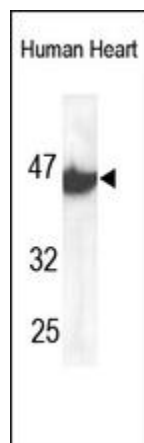
Format: Each vial contains 0.1 mL of crude serum with 0.09% sodium azide.

Alternate Names: Medium-chain specific acyl-CoA dehydrogenase, mitochondrial; MCAD; ACADM

Accession No.: P11310

Antigen: KLH-conjugated synthetic peptide encompassing a sequence within the C-term region of human ACADM.

Application Notes: E: 1:10,000-1:40,000; WB: 1:100-1:1,000



The ACADM Antibody is used in Western blot to detect ACADM in human fetal heart lysates.

Storage: Store at -20°C. Minimize freeze-thaw cycles. Product is guaranteed one year from the date of shipment.

For research use only, not for diagnostic or therapeutic procedures.