

ACTR-IIA Antibody

Subcategory: Rabbit Polyclonal Antibody

Cat. No.: 251303

Unit: 0.1 mg

Description:

Activin receptor type-2A (ACTR-IIA), on ligand binding, forms a receptor complex consisting of two type II and two type I transmembrane serine/threonine kinases. Type II receptors phosphorylate and activate type I receptors which autophosphorylate, then bind and activate SMAD transcriptional regulators. ACTR-IIA is a receptor for activin A, activin B and inhibin A.

Isotype: Rabbit Ig

Applications: E, WB, IHC

Species Reactivity: H, M, R, Hs, D, Ck, B, P

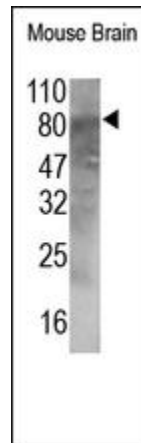
Format: Each vial contains 0.1 mg IgG in 0.1 ml (1 mg/ml) of PBS pH7.4 with 0.09% sodium azide. Antibody was purified by Protein-G affinity chromatography.

Alternate Names: Activin receptor type-2A; Activin receptor 2A; Activin receptor type IIA; ACTR-IIA; ACTRIIA; ACVR2A; ACVR2

Accession No.: P27037

Antigen: KLH-conjugated synthetic peptide encompassing a sequence within the N-term region of human ACTR-IIA.

Application Notes: E: 1:500-1:1,000; WB: 1:100-1:500; IHC: 1:100-1:500



The ACTR-IIA Antibody is used in Western blot to detect ACTR-IIA in mouse brain.

Storage: Store at -20°C. Minimize freeze-thaw cycles. Product is guaranteed one year from the date of shipment.

For research use only, not for diagnostic or therapeutic procedures.