

ADAM 19 Antibody

Subcategory: Rabbit Polyclonal Antibody

Cat. No.: 251997

Unit: 0.1 mg

Description:

Disintegrin and metalloproteinase domain-containing protein 19 (ADAM19) participates in the proteolytic processing of beta-type neuregulin isoforms which are involved in neurogenesis and synaptogenesis, suggesting a regulatory role in glial cell development. ADAM19 also cleaves alpha-2 macroglobulin and is involved in osteoblast differentiation and/or osteoblast activity in bone.

Isotype: Rabbit Ig

Applications: E, IHC, WB

Species Reactivity: H

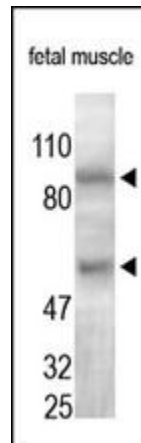
Format: Each vial contains 0.1 mg IgG in 0.1 ml (1 mg/ml) of PBS pH7.4 with 0.09% sodium azide. Antibody was purified by Protein-G affinity chromatography.

Alternate Names: Disintegrin and metalloproteinase domain-containing protein 19; ADAM 19; Meltrin-beta; Metalloprotease and disintegrin dendritic antigen marker; MADDAM; ADAM19; MLTNB

Accession No.: Q9H013

Antigen: KLH-conjugated synthetic peptide encompassing a sequence within the N-term region of human ADAM19.

Application Notes: E: 1:1,000-1:10,000; WB: 1:200-1:500; IHC: 1:100-1:500



The ADAM19 Antibody (Cat. No. 251997) is used in Western blot to detect ADAM19 in human fetal muscle lysates.

Storage: Store at -20°C. Minimize freeze-thaw cycles. Product is guaranteed one year from the date of shipment.

For research use only, not for diagnostic or therapeutic procedures.