

ADAM-TS2 Antibody

Subcategory: Rabbit Polyclonal Antibody

Cat. No.: 251979

Unit: 0.1 mg

Description:

A disintegrin and metalloproteinase with thrombospondin motifs 2 (ADAM-TS2) cleaves the propeptides of type I and II collagen prior to fibril assembly. ADAM-TS2 does not act on type III collagen. ADAM-TS2 also plays a role in development that is independent of its role in collagen biosynthesis. ADAM-TS2 cleaves the N-propeptide of collagen chain alpha-1(I) at Pro-[Gln and of alpha-1(II) and alpha-2(I) at Ala-[Gln. It is expressed at high level in skin, bone, tendon and aorta and at low levels in thymus and brain. Defects in ADAMTS2 are the cause of Ehlers-Danlos syndrome type 7C (EDS7C). EDS is a connective tissue disorder characterized by hyperextensible skin, atrophic cutaneous scars due to tissue fragility and joint hyperlaxity.

Isotype: Rabbit Ig

Applications: E, WB, IHC

Species Reactivity: H

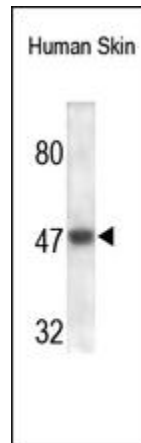
Format: Each vial contains 0.1 mg IgG in 0.1 ml (1 mg/ml) of PBS pH7.4, 0.5 % BSA with 0.09% sodium azide. Antibody was purified by immunogen-affinity chromatography.

Alternate Names: A disintegrin and metalloproteinase with thrombospondin motifs 2; ADAMTS-2; ADAM-TS 2; ADAM-TS2; Procollagen I/II amino propeptide-processing enzyme; Procollagen I N-proteinase; PC I-NP; Procollagen N-endopeptidase; pNPI; ADAMTS2; PCINP; PCPNI

Accession No.: O95450

Antigen: KLH-conjugated synthetic peptide encompassing a sequence within human ADAM-TS2 protein.

Application Notes: E: 1:1,000-1:10,000; WB: 1:100-1:500; IHC: 1:100-1:500



The ADAM-TS2 Antibody is used in Western blot to detect ADAM-TS2 in human skin cell lysates.

Storage: Store at -20°C. Minimize freeze-thaw cycles. Product is guaranteed one year from the date of shipment.

For research use only, not for diagnostic or therapeutic procedures.