

ADAM10 Antibody

Subcategory: Rabbit Polyclonal Antibody

Cat. No.: 251974

Unit: 0.1 mg

Description:

Disintegrin and metalloproteinase domain-containing protein 10 (ADAM10) cleaves the membrane-bound precursor of TNF-alpha at '76-Ala-|-Val-77' to its mature soluble form. ADAM10 is responsible for the proteolytic release of several other cell-surface proteins, including heparin-binding epidermal growth-like factor, ephrin-A2 and for constitutive and regulated alpha-secretase cleavage of amyloid precursor protein (APP). ADAM10 contributes to the normal cleavage of the cellular prion protein. ADAM10 is involved in the cleavage of the adhesion molecule L1 at the cell surface and in released membrane vesicles, suggesting a vesicle-based protease activity. ADAM10 also controls the proteolytic processing of Notch and mediates lateral inhibition during neurogenesis.

Isotype: Rabbit Ig

Applications: E, WB

Species Reactivity: H, M, R

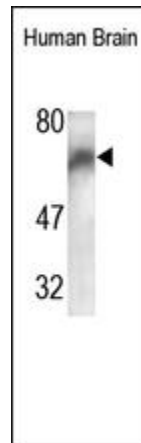
Format: Each vial contains 0.1 mg IgG in 0.1 ml (1 mg/ml) of PBS pH7.4 with 0.09% sodium azide. Antibody was purified by Protein-G affinity chromatography.

Alternate Names: Disintegrin and metalloproteinase domain-containing protein 10; ADAM 10; Mammalian disintegrin-metalloprotease; Kuzbanian protein homolog; CDw156; CD156c; ADAM10; KUZ; MADM

Accession No.: O14672

Antigen: KLH-conjugated synthetic peptide encompassing a sequence within the C-term region of human ADAM10.

Application Notes: E: 1:10,000-1:50,000; WB: 1:500-1:1,000



The ADAM10 Antibody is used in Western blot to detect ADAM10 in human fetal brain lysates.

Storage: Store at -20°C. Minimize freeze-thaw cycles. Product is guaranteed one year from the date of shipment.

For research use only, not for diagnostic or therapeutic procedures.