

ADCY2 Antibody

Subcategory: Rabbit Polyclonal Antibody

Cat. No.: 252003

Unit: 0.1 mg

Description:

Adenylate cyclase type 2 (ADCY2) is a membrane-bound, calmodulin-insensitive adenylyl cyclase. ADCY2 catalyzes $\text{ATP} = 3',5'\text{-cyclic AMP} + \text{diphosphate}$. ADCY2 is stimulated by the G protein beta and gamma subunit complex.

Isotype: Rabbit Ig

Applications: E, WB

Species Reactivity: H

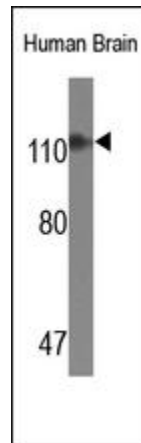
Format: Each vial contains 0.1 mL of crude serum with 0.09% sodium azide.

Alternate Names: Adenylate cyclase type 2; Adenylate cyclase type II; ATP pyrophosphate-lyase 2; Adenylyl cyclase 2; ADCY2; KIAA1060

Accession No.: Q08462

Antigen: KLH-conjugated synthetic peptide encompassing a sequence within the N-term region of human ADCY2.

Application Notes: E: 1:10,000-1:50,000; WB: 1:100-1:500



The ADCY2 Antibody is used in Western blot to detect ADCY2 in human fetal brain tissue lysates.

Storage: Store at -20°C . Minimize freeze-thaw cycles. Product is guaranteed one year from the date of shipment.

For research use only, not for diagnostic or therapeutic procedures.