

## ADRA1D Antibody

**Subcategory:** Rabbit Polyclonal Antibody

**Cat. No.:** 254499

**Unit:** 0.1 mg

**Description:**

Adrenergic Receptors (ARs) are members of the 7-transmembrane domain G-protein-coupled receptor superfamily that bind the endogenous catecholamines epinephrine and norepinephrine. Pharmacological, structural, and molecular cloning data indicate significant heterogeneity within this receptor family. Nine receptor subtypes have been identified thus far including three alpha 1 AR subtypes (1A/D, 1B, and 1C), three alpha 2 ARs (2A, 2B, and 2C), and three beta AR subtypes (1, 2, and 3). ARs participate in either the onset or maintenance of several disease states including hypertension, cardiac dysfunction (congestive heart failure, ischemia, arrhythmias), diabetes, glaucoma, depression, and impotence.

**Isotype:** Rabbit Ig

**Applications:** E, WB

**Species Reactivity:** H, M, R, Zf, Ds

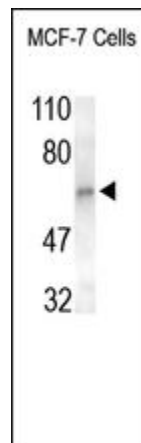
**Format:** Each vial contains 0.1 mg IgG in 0.1 ml (1 mg/ml) of PBS pH7.4 with 0.09% sodium azide. Antibody was purified by Protein-A affinity chromatography.

**Alternate Names:** Alpha-1D adrenergic receptor; Alpha-1A adrenergic receptor; Alpha-1D adrenoreceptor; Alpha-adrenergic receptor 1a; ADRA1D; ADRA1A

**Accession No.:** P25100

**Antigen:** KLH-conjugated synthetic peptide encompassing a sequence within the center region of human ADRA1D.

**Application Notes:** E: 1:10,000-1:40,000; WB: 1:500-1:2,000



**The ADRA1C Antibody is used in Western blot to detect ADRA1C in human MCF-7 cell lysates.**

**Storage:** Store at -20°C. Minimize freeze-thaw cycles. Product is guaranteed one year from the date of shipment.

For research use only, not for diagnostic or therapeutic procedures.