

## Adrenomedullin Antibody

**Subcategory:** Rabbit Polyclonal Antibody

**Cat. No.:** 250478

**Unit:** 0.1 mg

**Description:**

Adrenomedullin (AM) is a potent hypotensive and vasodilator agent found in human pheochromocytoma. AM inhibits basal ACTH secretion. The hormone precursor called proadrenomedullin, is a 185-aa protein whereas the mature form is 52-aa long.

**Isotype:** Rabbit Ig

**Applications:** E, IHC, WB

**Species Reactivity:** H, M, R

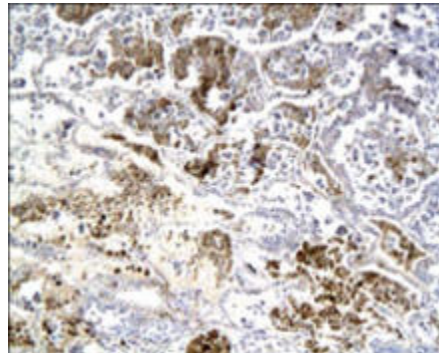
**Format:** Each vial contains 0.1 mg IgG in 0.1 ml (1 mg/ml) of PBS pH7.4 with 0.09% sodium azide. Antibody was purified by Protein-G affinity chromatography.

**Alternate Names:** Adrenomedullin; AM; ADM

**Accession No.:** P35318

**Antigen:** KLH-conjugated synthetic peptide encompassing a sequence within the N-term region of human AM.

**Application Notes:** E: 1:500-1:1,000; WB: 1:200-1:500; IHC: 1:200-1:500



**Adrenomedullin staining in human lung cancer tissue. Paraffin-embedded human lung cancer tissue is stained with Adrenomedullin antibody (Cat. No. 250478) used at 1:200 dilution.**

**Storage:** Store at -20°C. Minimize freeze-thaw cycles. Product is guaranteed one year from the date of shipment.

**Product Citations:** Zhi LI et al. 2013. Biomed Environmental Science. 2013. 26(2):118-127. PMID# 23336135.

For research use only, not for diagnostic or therapeutic procedures.