

AKAP-7 Antibody

Subcategory: Rabbit Polyclonal Antibody

Cat. No.: 252016

Unit: 0.1 mg

Description:

A-kinase anchor protein 7 isoforms alpha and beta (AKAP-7) targets the cAMP-dependent protein kinase (PKA) to the plasma membrane, and permits functional coupling to the L-type calcium channel.

Isotype: Rabbit Ig

Applications: E, WB

Species Reactivity: H

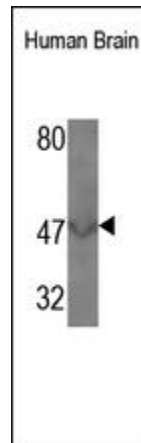
Format: Each vial contains 0.1 mL of crude serum with 0.09% sodium azide.

Alternate Names: A-kinase anchor protein 7 isoforms alpha and beta; AKAP-7 isoforms alpha and beta; Protein kinase A-anchoring protein 7 isoforms alpha/beta; A-kinase anchor protein 18 kDa; AKAP 18; AKAP7; AKAP18

Accession No.: O43687

Antigen: KLH-conjugated synthetic peptide encompassing a sequence within the C-term region of human AKAP-7.

Application Notes: E: 1:10,000-1:50,000; WB: 1:200-1:500



The AKAP-7 Antibody is used in Western blot to detect AKAP-7 in human fetal brain lysates.

Storage: Store at -20°C. Minimize freeze-thaw cycles. Product is guaranteed one year from the date of shipment.

For research use only, not for diagnostic or therapeutic procedures.