

ANG1 Antibody

Subcategory: Rabbit Polyclonal Antibody

Cat. No.: 252053

Unit: 0.1 mg

Description:

Angiopoietin-1 (ANG-1) binds and activates the TIE2 receptor by inducing its tyrosine phosphorylation. ANG-1 is implicated in endothelial developmental processes and they are distinct from that of VEGF. ANG-1 appears to play a crucial role in mediating reciprocal interactions between the endothelium and surrounding matrix and mesenchyme. ANG-1 also mediates blood vessel maturation/stability, and plays an important role in the heart early development.

Isotype: Rabbit Ig

Applications: E, WB, IHC

Species Reactivity: H, M

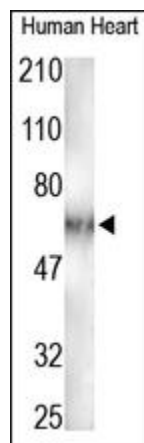
Format: Each vial contains 0.1 mg IgG in 0.1 ml (1 mg/ml) of PBS pH7.4, 1% BSA with 0.09% sodium azide. Antibody was purified by immunogen-affinity chromatography.

Alternate Names: Angiopoietin-1; ANG-1; ANGPT1; KIAA0003

Accession No.: Q15389

Antigen: KLH-conjugated synthetic peptide encompassing a sequence within the N-term region of human ANG1.

Application Notes: E: 1:5,000-1:20,000; WB: 1:200-1:500; IHC: 1:50-1:200



The ANG1 Antibody is used in Western blot to detect ANG1 in human heart lysates.

Storage: Store at -20°C. Minimize freeze-thaw cycles. Product is guaranteed one year from the date of shipment.

For research use only, not for diagnostic or therapeutic procedures.