

## ANGPTL6 Antibody

**Subcategory:** Rabbit Polyclonal Antibody

**Cat. No.:** 252061

**Unit:** 0.1 mg

**Description:**

Angiopoietin-related protein 6 (ANGPTL6) plays a role in the wound healing process. ANGPTL4 promotes epidermal proliferation, remodeling and regeneration. ANGPTL4 promotes the chemotactic activity of endothelial cells and induces neovascularization. ANGPTL4 counteracts high-fat diet-induced obesity and related insulin resistance through increased energy expenditure.

**Isotype:** Rabbit Ig

**Applications:** E, WB

**Species Reactivity:** H

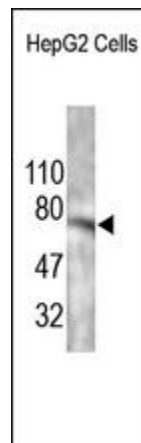
**Format:** Each vial contains 0.1 mg IgG in 0.1 ml (1 mg/ml) of PBS pH7.4, 2% BSA with 0.09% sodium azide. Antibody was purified by immunogen affinity chromatography.

**Alternate Names:** Angiopoietin-related protein 6; Angiopoietin-like protein 6; Angiopoietin-related growth factor; Angiopoietin-related protein 5; ANGPTL6; AGF; ARP5

**Accession No.:** Q8NI99

**Antigen:** KLH-conjugated synthetic peptide encompassing a sequence within the center region of human ANGPTL6.

**Application Notes:** E: 1:5,000-1:20,000; WB: 1:200-1:5,000



**The ANGPTL6 Antibody is used in Western blot to detect ANGPTL6 in Jurkat cell lysates.**

**Storage:** Store at -20°C. Minimize freeze-thaw cycles. Product is guaranteed one year from the date of shipment.

**Product Citations:** Wang H et al. 2013. Elsevier. Experimental Eye Research. 108: 110-119. PMID# 23276812

For research use only, not for diagnostic or therapeutic procedures.