

## Anillin Antibody

**Subcategory:** Rabbit Polyclonal Antibody

**Cat. No.:** 252062

**Unit:** 0.1 mg

**Description:**

Anillin is an ubiquitously-expressed protein required for cytokinesis. Anillin localizes to the nucleus during interphase, the cortex following nuclear envelope breakdown, and the cleavage furrow during cytokinesis.

**Isotype:** Rabbit Ig

**Applications:** E, IHC

**Species Reactivity:** H

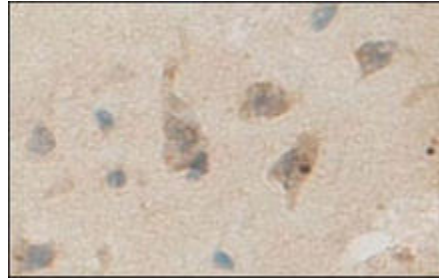
**Format:** Each vial contains 0.1 mg IgG in 0.1 ml (1 mg/ml) of PBS pH7.4 with 0.09% sodium azide. Antibody was purified by Protein-G affinity chromatography.

**Alternate Names:** Actin-binding protein anillin; Anillin; ANLN

**Accession No.:** Q9NQW6

**Antigen:** KLH-conjugated synthetic peptide encompassing a sequence within human anillin.

**Application Notes:** E: 1:500-1:1,000; IHC: 1:100-1:500



**Anillin staining in brain. Paraffin-embedded human brain is stained with Anillin Antibody (Cat. No. 252062) used at 1:200 dilution.**

**Storage:** Store at -20°C. Minimize freeze-thaw cycles. Product is guaranteed one year from the date of shipment.

For research use only, not for diagnostic or therapeutic procedures.