

Annexin A Antibody

Subcategory: Rabbit Polyclonal Antibody

Cat. No.: 251540

Unit: 0.1 mg

Description:

Annexin A1 (annexin A) is a calcium-dependent phospholipid-binding protein which promotes membrane fusion and is involved in exocytosis. Because Annexin A regulates phospholipase A2 activity, it may have potential anti-inflammatory properties. It is found in the cilium, nucleus and basolateral cell membrane of ciliated cells in the tracheal endothelium as well as in the cytoplasm of type II pneumocytes and alveolar macrophages. Annexin A can form homodimer in placenta by transglutamylation.

Isotype: Rabbit Ig

Applications: E, IHC, WB

Species Reactivity: B, Ch, D, Hs, H, Mk, M, P, R

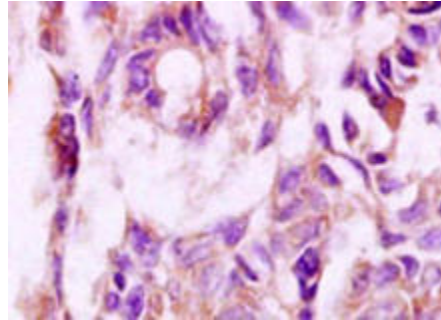
Format: Each vial contains 0.1 mg IgG in 0.1 ml (1 mg/ml) of PBS pH7.4 with 0.09% sodium azide. Antibody was purified by Protein-G affinity chromatography.

Alternate Names: Annexin I; Annexin A1; Annexin-1; Lipocortin I; Calpactin II; Chromobindin-9; p35; Phospholipase A2 inhibitory protein; ANXA1; ANX1; LPC1

Accession No.: P04083

Antigen: KLH-conjugated synthetic peptide encompassing a sequence within the C-term region of human annexin A.

Application Notes: E: 1:500-1:1,000; WB: 1:100-1:500; IHC: 1:100-1:500



Annexin A staining in rectal cancer. Formalin-fixed paraffin-embedded human rectal carcinoma tissue is stained with Annexin A Antibody (Cat. No. 251540) used at 1:200 dilution.

Storage: Store at -20°C. Minimize freeze-thaw cycles. Product is guaranteed one year from the date of shipment.

For research use only, not for diagnostic or therapeutic procedures.