

## Annexin II Antibody

**Subcategory:** Rabbit Polyclonal Antibody

**Cat. No.:** 250471

**Unit:** 0.1 mg

**Description:**

Annexin II is a calcium-regulated membrane-binding protein whose affinity for calcium is greatly enhanced by anionic phospholipids. Annexin II is involved in signal transduction and cellular growth.

**Isotype:** Rabbit Ig

**Applications:** E, WB, IHC

**Species Reactivity:** H, M, R

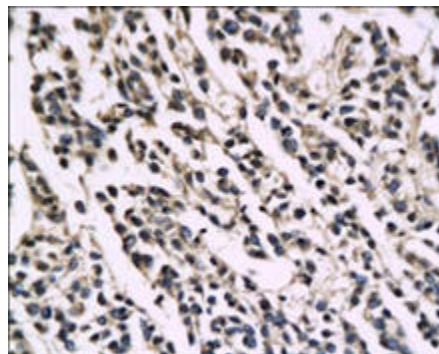
**Format:** Each vial contains 0.1 mg IgG in 0.1 ml (1 mg/ml) of PBS pH7.4 with 0.09% sodium azide. Antibody was purified by Protein-G affinity chromatography.

**Alternate Names:** Annexin A2, Annexin-2, Annexin II, Lipocortin II, Calpactin I heavy chain, Chromobindin-8, p36, Proein I, Placental anticoagulant protein IV, PAP-IV, ANXA2, ANX2, ANX2L4, CAL1H, LPC2D

**Accession No.:** P07355

**Antigen:** KLH-conjugated synthetic peptide encompassing a sequence within the C-term region of human Annexin II.

**Application Notes:** E: 1:500-1:1,000; WB: 1:100-1:500; IHC: 1:100-500



**Annexin II staining of human tumor xenografts in nude mouse tissue. Paraffin-embedded nude mouse tissue containing human tumor xenografts is stained with Annexin II Antibody (Cat. No. 250471) used at 1:200 dilution.**

**Storage:** Store at -20°C. Minimize freeze-thaw cycles. Product is guaranteed one year from the date of shipment.

For research use only, not for diagnostic or therapeutic procedures.