

Annexin II Antibody

Subcategory: Rabbit Polyclonal Antibody

Cat. No.: 252069

Unit: 0.1 mg

Description:

Annexins are a multigene family of Ca⁺⁺-regulated phospholipid-binding proteins. They serve as membrane-membrane, or membrane-cytoskeleton linkers, and regulate the formation of lipid domains in the plasma membrane. Annexins possess a series of unique 70 amino acid annexin-repeat modules that form a curved disk and allow for the creation of an intercessory complex between plasma membrane and cytofilaments. Annexin II is a heterotetramer containing 2 light chains of S100A10/p11 and 2 heavy chains of ANXA2/p36. Annexin II interacts with ATP1B1 and DYSF. Annexin II also interacts with human cytomegalovirus (HCMV).

Isotype: Rabbit Ig

Applications: E, IHC, WB

Species Reactivity: H

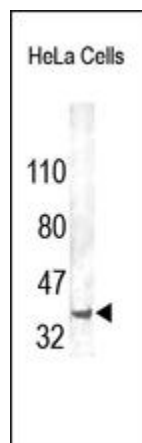
Format: Each vial contains 0.1 mg IgG in 0.1 ml (1 mg/ml) of PBS pH7.4, 1% BSA with 0.09% sodium azide. Antibody was purified by immunogen affinity chromatography.

Alternate Names: Annexin A2; Annexin-2; Annexin II; Lipocortin II; Calpactin-1 heavy chain; Calpactin I heavy chain; Chromobindin-8; p36; Protein I; Placental anticoagulant protein IV; PAP-IV; ANXA2; ANX2; ANX2L4; CAL1H; LPC2D

Accession No.: P07355

Antigen: KLH-conjugated synthetic peptide encompassing a sequence within the N-term region of human Annexin II.

Application Notes: E: 1:1,000-1:10,000; WB: 1:100-1:500; IHC: 1:50-1:200



The Annexin II Antibody (Cat. No. 252069) is used in Western blot to detect annexin II in HeLa cell lysates.

Storage: Store at -20°C. Minimize freeze-thaw cycles. Product is guaranteed one year from the date of shipment.

For research use only, not for diagnostic or therapeutic procedures.