

## Anti-human IgG (KT47) Antibody

**Subcategory:** Control Antibody, Mouse Monoclonal Antibody, Secondary Antibody

**Cat. No.:** 254532

**Unit:** 0.1 mg

### Description:

This monoclonal antibody recognizes human IgG (IgG1, IgG2, IgG3 and IgG4) in ELISA when used as primary antibody. It does not react with human IgA, IgM and IgE.

**Isotype:** Mouse IgG1

**Applications:** E

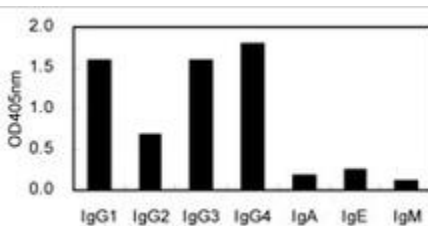
**Species Reactivity:** H

**Format:** Each vial contains 0.1 mg IgG in 0.1 ml (1 mg/ml) of PBS pH7.4 with 0.09% sodium azide. Antibody was purified by Protein-A affinity chromatography.

**Alternate Names:** Immunoglobulin G, type g heavy chain

**Antigen:** Recombinant soluble human IgG-Fc fusion protein

**Application Notes:** E: 1 ug/ml



**Detection of human immunoglobulin classes and subclasses by ELISA using Anti-human IgG (KT47) Antibody (Cat. No. 254532).**

**Storage:** Store at -20°C. Minimize freeze-thaw cycles. Product is guaranteed one year from the date of shipment.

For research use only, not for diagnostic or therapeutic procedures.