

Anti-rat light chain Ig Antibody

Subcategory: Control Antibody, Mouse Monoclonal Antibody

Cat. No.: 253243

Unit: 0.1 mg

Description:

This monoclonal antibody recognizes rat immunoglobulin light chain. It does not react with mouse IgG. The antibody has been tested with rat IgM, IgG1, IgG2a, IgG2b and IgG2c with kappa chains (not tested with lambda chains).

Isotype: Mouse IgG2b

Applications: E, FC, IF, WB

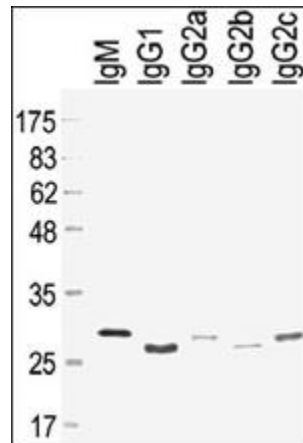
Species Reactivity: R

Format: Each vial contains 0.1 mg IgG in 0.1 ml (1 mg/ml) of PBS pH7.4 with 0.09% sodium azide. Antibody was purified by Protein-A affinity chromatography.

Alternate Names: Immunoglobulin G; kappa light chain

Antigen: Purified rat IgG

Application Notes: E: 1:5,000; WB: 1:10,000; IF: 1:200; FC: 1:200



The rat light chain Ig Antibody is used in Western blot to detect purified rat IgM, IgG1, IgG2a, IgG2b and IgG2c.

Storage: Store at -20°C. Minimize freeze-thaw cycles. Product is guaranteed 6 months from the date of shipment.

For research use only, not for diagnostic or therapeutic procedures.