

AXIN2 Antibody

Subcategory: Rabbit Polyclonal Antibody

Cat. No.: 200133

Unit: 0.1 mg

Description:

Axin2 is an inhibitor of the Wnt signaling pathway and down-regulates beta-catenin. Defects in Axin2 are the cause of colorectal cancer.

Isotype: Rabbit Ig

Applications: E, WB

Species Reactivity: H, M, R

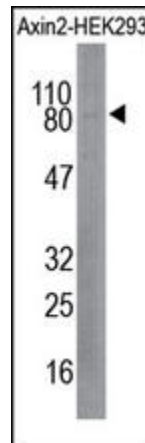
Format: Each vial contains 0.1 mg IgG in 0.1 ml (1 mg/ml) of PBS pH7.4, 14% glycerol with 0.09% sodium azide. Antibody was purified by Protein-G affinity chromatography.

Alternate Names: Axin-2; Axis inhibition protein 2; Conductin; Axin-like protein; Axil; AXIN2

Accession No.: Q9Y2T1

Antigen: KLH-conjugated synthetic peptide encompassing a sequence within the N-term region of human AXIN2.

Application Notes: E: 1:500-1:1,000; WB: 1:100-1:500



The AXIN2 Antibody is used in Western blot to detect Axin2 in AXIN2 293 Cell Lysate (Cat. No. 401340).

Storage: Store at -20°C. Minimize freeze-thaw cycles. Product is guaranteed one year from the date of shipment.

For research use only, not for diagnostic or therapeutic procedures.