

## Bcl-2 Antibody

**Subcategory:** Mouse Monoclonal Antibody

**Cat. No.:** 251711

**Unit:** 0.1 mg

**Description:**

Apoptosis regulator Bcl-2 (Bcl-2) suppresses apoptosis in a variety of cell systems including factor-dependent lymphohematopoietic and neural cells. Bcl-2 regulates cell death by controlling mitochondrial membrane permeability. Bcl-2 functions in a feedback loop system with caspases, inhibiting caspase activity either by preventing the release of cytochrome c from the mitochondria and/or by binding to the apoptosis-activating factor (APAF-1). A chromosomal aberration involving Bcl-2 has been found in chronic lymphatic leukemia.

**Isotype:** Mouse IgG1

**Applications:** E, ICC, IHC, WB

**Species Reactivity:** H

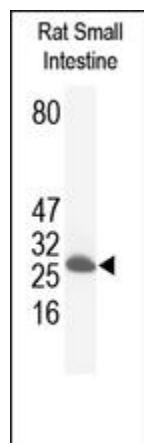
**Format:** Each vial contains 0.1 mg IgG in 0.1 ml (1 mg/ml) of PBS pH7.4, 2% BSA with 0.09% sodium azide. Antibody was purified by Protein-G affinity chromatography.

**Alternate Names:** Apoptosis regulator Bcl-2; BCL2

**Accession No.:** P10415

**Antigen:** Thyroglobulin-conjugated synthetic peptide encompassing a sequence within the N-term region of human Bcl-2.

**Application Notes:** E: 1:500-1:1,000; WB: 1:50-1:200; IHC: 1:100-1:250; ICC: 1:100-1:250



**The Bcl-2 Antibody is used in Western blot to detect Bcl-2 in rat small intestine lysates.**

**Storage:** Store at -20°C. Minimize freeze-thaw cycles. Product is guaranteed one year from the date of shipment.

**Product Citations:** Wu Q et al. 2011. Journal of Ethnopharmacology. 138(1):34-39. PMID# 21856397.

For research use only, not for diagnostic or therapeutic procedures.