

Beta-1 Integrin Antibody

Subcategory: Rabbit Polyclonal Antibody

Cat. No.: 251162

Unit: 0.1 mg

Description:

Beta-1 Integrin is a receptor for collagen, where it binds the proline-hydroxylated sequence G-F-P-G-E-R. Beta-1 integrin associates with alpha-1, alpha-2, alpha-3, alpha-4, alpha-5, alpha-6, alpha-7, alpha-8, alpha-9, alpha-10, alpha-11 or alpha-V. In HIV-1 infection, the interaction of beta-1 integrin with extracellular viral Tat protein enhances angiogenesis in Kaposi's sarcoma lesions.

Isotype: Rabbit Ig

Applications: E, IHC, WB

Species Reactivity: B, Ck, D, Hs, H, M, P, Rb, R, Sh

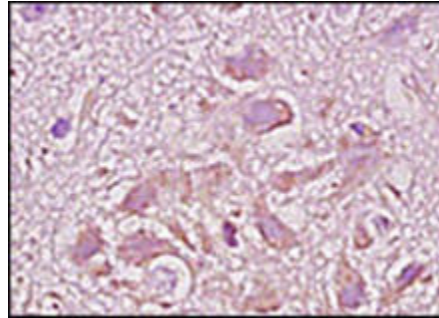
Format: Each vial contains 0.1 mg IgG in 0.1 ml (1 mg/ml) of PBS pH7.4 with 0.09% sodium azide. Antibody was purified by immunogen-affinity chromatography.

Alternate Names: Integrin beta-1; Integrin ?1; Integrin-?1; Fibronectin receptor subunit beta; Integrin VLA-4 subunit beta; CD29; ITGB1; FN1B

Accession No.: P05556

Antigen: KLH-conjugated synthetic peptide encompassing a sequence within the N-term region of human Beta-1 integrin.

Application Notes: E: 1:500-1:1,000; WB: 1:100-1:500; IHC: 1:100-1:500



Beta-1 integrin staining in rat brain. Formalin-fixed paraffin-embedded rat brain is stained with Beta-1 Integrin Antibody (Cat. No. 251162) used at 1:200 dilution.

Storage: Store at -20°C. Minimize freeze-thaw cycles. Product is guaranteed one year from the date of shipment.

For research use only, not for diagnostic or therapeutic procedures.