

Beta-Amyloid [1-28] Antibody

Subcategory: Rabbit Polyclonal Antibody

Cat. No.: 250922

Unit: 0.1 mg

Description:

Beta-amyloid production results from cleavage in the extracellular domain of APP by the beta-secretase (BACE1), which results in the production of the APP C-terminal fragment C99. This fragment is further cleaved by the gamma-secretase at residues 40-42 to produce beta-amyloid 40 and 42 peptides. Beta-amyloid aggregation and neuritic plaque formation are pathologic hallmarks of Alzheimer disease. This fragment is the amino terminus (1-28) of beta amyloid.

Isotype: Rabbit Ig

Applications: E, IHC, WB

Species Reactivity: H, M, R

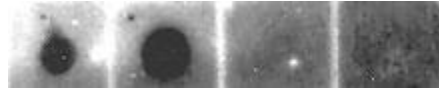
Format: Each vial contains 0.1 mg IgG in 0.1 ml (1 mg/ml) of PBS pH7.4 with 0.09% sodium azide. Antibody was purified by Protein-G affinity chromatography.

Alternate Names: APP; ABPP; Alzheimer disease amyloid protein; Cerebral vascular amyloid peptide; CVAP; Protease nexin-II; PN-II; APPI; PreA5

Accession No.: P05067

Antigen: KLH-conjugated synthetic peptide encompassing the sequence (1-28) of human Beta Amyloid.

Application Notes: E: 1:500-1:1,000; WB: 1:100-1:500; IHC: 1:200-1:500



Beta-amyloid peptides detection by dot blot with Beta-Amyloid [1-28] Antibody (Cat. No. 250922) used at 1:500 dilution. From left to right panels: Beta Amyloid [1-40] (Cat. No. 350016), Beta Amyloid [1-42] (Cat. No. 350017), BSA, no peptide.

Storage: Store at -20°C. Minimize freeze-thaw cycles. Product is guaranteed one year from the date of shipment.

For research use only, not for diagnostic or therapeutic procedures.