

bFGF Antibody

Subcategory: Rabbit Polyclonal Antibody

Cat. No.: 250559

Unit: 0.1 mg

Description:

Basic fibroblast growth factor (bFGF or FGF2), also called heparin-binding growth factor 2 is an angiogenic agent in vivo and potent mitogen for a variety of cell types in vitro. bFGF activates the MAP kinase signaling pathway and plays a role in synaptic transmission. In addition bFGF induces cell proliferation and binds heparin more strongly than aFGF.

Isotype: Rabbit Ig

Applications: E, IHC, WB

Species Reactivity: B, Ck, GP, H, M, Rb, R, Sh

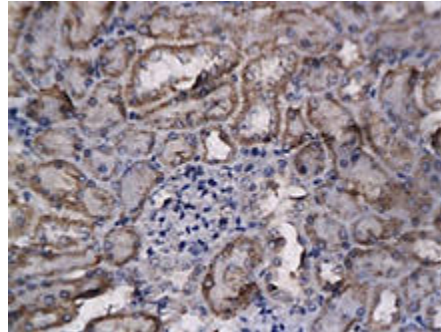
Format: Each vial contains 0.1 mg IgG in 0.1 ml (1 mg/ml) of PBS pH7.4 with 0.09% sodium azide. Antibody was purified by Protein-G affinity chromatography.

Alternate Names: Heparin-binding growth factor 2; HBGF-2; Basic fibroblast growth factor; bFGF; Prostatropin; FGF2; FGFB

Accession No.: P09038

Antigen: KLH-conjugated synthetic peptide encompassing a sequence within the center region of human bFGF.

Application Notes: E: 1:500-1:1,000; WB: 1:200-1:500; IHC: 1:200-1:500



bFGF staining in mouse kidney. Formalin-fixed paraffin-embedded mouse kidney tissue is stained with bFGF Antibody (Cat. No. 250559) used at 1:200 dilution.

Storage: Store at -20°C. Minimize freeze-thaw cycles. Product is guaranteed one year from the date of shipment.

Product Citations: Nie C et al. 2012. J Tissue Eng Regen Med. doi: 10.1002/term.1622. PMID# 23038677.

For research use only, not for diagnostic or therapeutic procedures.