

BMP-15 Antibody

Subcategory: Rabbit Polyclonal Antibody

Cat. No.: 254522

Unit: 0.1 mg

Description:

BMP15, also called GDF9B, is a member of the bone morphogenetic protein family which is part of the transforming growth factor-beta superfamily that are involved in embryonic development and adult tissue homeostasis. BMP15 is expressed exclusively in the oocyte. It is an oocyte-specific growth/differentiation factor that may be involved in oocyte maturation and follicular development. Defects in BMP15 are the cause of ovarian dysgenesis type 2. BMP15 could be used as an oogenesis marker to track human amniotic fluid stem cells differentiation into the oocyte-like cells.

Isotype: Rabbit Ig

Applications: E, IHC

Species Reactivity: H

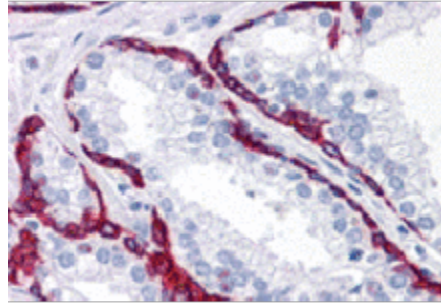
Format: Each vial contains 0.1 mg IgG in 0.1 ml (1 mg/ml) of PBS pH7.4 with 0.02% sodium azide. Antibody was purified by immunogen-affinity chromatography.

Alternate Names: Bone morphogenetic protein 15, BMP-15, Growth/differentiation factor 9B, GDF9B, GDF-9B, ODG2, POF4

Accession No.: NP_005439

Antigen: KLH-conjugated synthetic peptide encompassing a sequence within the N-term region of human BMP-15.

Application Notes: E: 1:500-1:1,000; IHC: 1:100-1:500



Immunohistochemistry of BMP-15 in human prostate tissue with BMP-15 Antibody (Cat. No. 254522) at 10 ug/mL.

Storage: Store at -20°C. Minimize freeze-thaw cycles. Product is guaranteed one year from the date of shipment.

For research use only, not for diagnostic or therapeutic procedures.