

## BNP (3A6F) Antibody

**Subcategory:** Mouse Monoclonal Antibody

**Cat. No.:** 252731

**Unit:** 0.1 ml

**Description:**

BNP (Brain natriuretic peptide) is a cardiac hormone. It has a variety of biological actions including natriuresis, diuresis, vasorelaxation, and inhibition of renin and aldosterone secretion. BNP is used to treat heart failure.

**Isotype:** Mouse IgG1

**Applications:** E, IHC

**Species Reactivity:** H

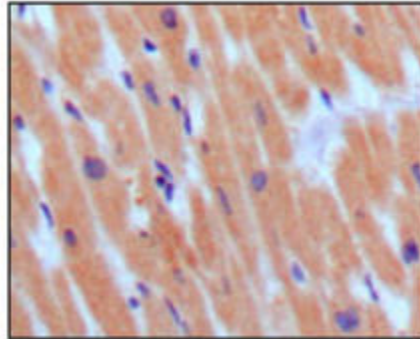
**Format:** Each vial contains 0.1 ml ascitic fluid with 0.03% sodium azide.

**Alternate Names:** Natriuretic peptide B; brain natriuretic peptide 32; BNP-32; NPPB; BNP

**Accession No.:** P16860

**Antigen:** Synthetic peptide corresponding to aa (Glu-Pro-Leu-Gln-Glu-Ser-Pro-Arg-Pro-Thr-Gly-Val-Trp-Cys) of human BNP, conjugated to KLH.

**Application Notes:** E: 1:10,000; IHC: 1:200-1:1000



**BNP staining in heart. Paraffin-embedded human myocardium tissue is stained with BNP (3A6F) Antibody (Cat. No. 252731) used at 1:200 dilution with DAB staining.**

**Storage:** Store at 4°C for short term use only. Store at -20°C for storage over 1 month. Product is guaranteed 6 months from the date of shipment.

For research use only, not for diagnostic or therapeutic procedures.