

## BZW1 Antibody

**Subcategory:** Rabbit Polyclonal Antibody

**Cat. No.:** 252177

**Unit:** 0.1 mg

**Description:**

Basic leucine zipper and W2 domain-containing protein 1 (BZW1) is a transcription factor that enhances histone H4 gene transcription but does not seem to bind DNA directly. BZW1 has been shown to interact with PSTPIP1 and CDC5L.

**Isotype:** Rabbit Ig

**Applications:** E, WB, IHC

**Species Reactivity:** H, M

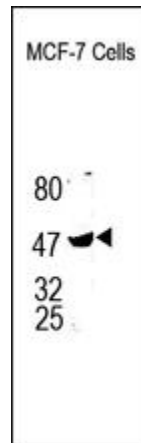
**Format:** Each vial contains 0.1 mg IgG in 0.1 ml (1 mg/ml) of PBS pH7.4, 0.5% BSA with 0.09% sodium azide. Antibody was purified by immunogen affinity chromatography.

**Alternate Names:** Basic leucine zipper and W2 domain-containing protein 1; Protein Orf; BZW1; BZAP45; KIAA0005

**Accession No.:** Q7L1Q6

**Antigen:** KLH-conjugated synthetic peptide encompassing a sequence within the C-term region of human BZW1.

**Application Notes:** E: 1:10,000-1:50,000; WB: 1:250-1:1,000; IHC: 1:50-1:200



**The BZW1 Antibody is used in Western blot to detect BZW1 in MCF-7 cell lysates.**

**Storage:** Store at -20°C. Minimize freeze-thaw cycles. Product is guaranteed one year from the date of shipment.

For research use only, not for diagnostic or therapeutic procedures.