

CDK4 Antibody

Subcategory: Rabbit Polyclonal Antibody

Cat. No.: 252203

Unit: 0.1 mg

Description:

Cyclin-dependent kinase 4 (CDK4) is a Ser/Thr-kinase component of cyclin D-CDK4 (DC) complexes that phosphorylate and inhibit members of the retinoblastoma (RB) protein family including RB1 and regulate the cell-cycle during G1/S transition. Phosphorylation of RB1 allows dissociation of the transcription factor E2F from the RB/E2F complexes and the subsequent transcription of E2F target genes which are responsible for the progression through the G1 phase. CDK4 hypophosphorylates RB1 in early G1 phase. Cyclin D-CDK4 complexes are major integrators of various mitogenic and antimitogenic signals. CDK4 phosphorylates SMAD3 in a cell-cycle-dependent manner and represses its transcriptional activity. CDK4 is also a component of the ternary complex, cyclin D/CDK4/CDKN1B, required for nuclear translocation and activity of the cyclin D-CDK4 complex. Defects in CDK4 are a cause of susceptibility to cutaneous malignant melanoma type 3 (CMM3). Malignant melanoma is a malignant neoplasm of melanocytes, arising de novo or from a pre-existing benign nevus, which occurs most often in the skin but also involves other sites.

Isotype: Rabbit Ig

Applications: E, WB, IHC

Species Reactivity: H, M, R

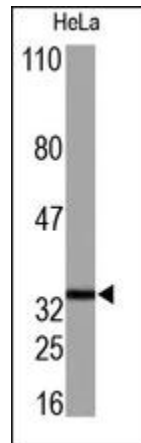
Format: Each vial contains 0.1 mg IgG in 0.1 ml (1 mg/ml) of PBS pH7.4, 0.5% BSA with 0.09% sodium azide. Antibody was purified by immunogen affinity chromatography.

Alternate Names: Cell division protein kinase 4; Cyclin-dependent kinase 4; PSK-J3; CDK4

Accession No.: P11802

Antigen: KLH-conjugated synthetic peptide encompassing a sequence within the C-term region of human CDK4.

Application Notes: E: 1:8,000-1:20,000; WB: 1:100-1:1,000



The CDK4 Antibody is used in Western blot to detect CDK4 in HeLa cell lysates.

Storage: Store at -20°C. Minimize freeze-thaw cycles. Product is guaranteed one year from the date of shipment.

For research use only, not for diagnostic or therapeutic procedures.