

GFP (4B10) Antibody

Subcategory: Mouse Monoclonal Antibody

Cat. No.: 252717

Unit: 0.1 mg

Description:

GFP (Green fluorescent protein) is fluorescent protein isolated from *Aequorea coerulea*. GFP is commonly used in molecular biology experiments due to its excitable emission and adsorption spectrum when exposed to blue light. The major excitation wavelength is 395nm, and the major emission peak is 509nm.

Isotype: Mouse IgG2a

Applications: E, FC, ICC, WB

Species Reactivity: Bact

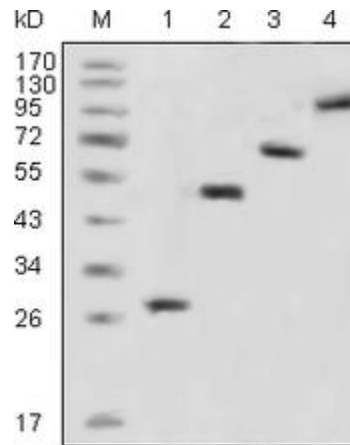
Format: Each vial contains 0.1 mg IgG in PBS pH7.4 with 0.03% sodium azide. Antibody was purified by Protein-G affinity chromatography.

Alternate Names: GFP; Green Fluorescent protein

Accession No.: Q6YGZ0

Antigen: Purified recombinant fragment of GFP expressed in *E. coli*.

Application Notes: E: 1:10000; WB: 1:500-1:2000; ICC: 1:200-1:1000; FC: 1:200-1:400



The GFP (4B10) Antibody (Cat. No. 252717) is used in Western blot to detect recombinant GFP protein (1) and various recombinant proteins fused to GFP (2, 3, 4).

Storage: Store at 4°C for short term use only. Store at -20°C for storage over 1 month. Product is guaranteed 6 months from the date of shipment.

For research use only, not for diagnostic or therapeutic procedures.