

## HHV-4 BSLF2 Antibody

**Subcategory:** Rabbit Polyclonal Antibody

**Cat. No.:** 251350

**Unit:** 0.1 mg

**Description:**

The Epstein-Barr virus (EBV), also called human herpesvirus 4 (HHV-4), is a virus of the herpes family, which includes herpes simplex virus 1 and 2, and is one of the most common viruses in humans. It is best known as the cause of infectious mononucleosis. It is also associated with particular forms of cancer, particularly Hodgkin's lymphoma, Burkitt's lymphoma, nasopharyngeal carcinoma, and central nervous system lymphomas associated with HIV. This antibody recognizes the BSLF2/BMLF1 protein from HHV-4 type 2.

**Isotype:** Rabbit Ig

**Applications:** E, WB, IHC

**Species Reactivity:** Vs

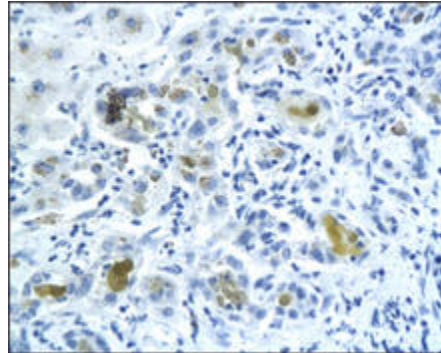
**Format:** Each vial contains 0.1 mg IgG in 0.1 ml (1 mg/ml) of PBS pH7.4 with 0.09% sodium azide. Antibody was purified by Protein-G affinity chromatography.

**Alternate Names:** BSLF2; BMLF1 protein; Epstein-Barr virus; EBV; HHV-4; HHV4; Human herpes virus 4 type 2

**Accession No.:** A7UMSO

**Antigen:** KLH-conjugated synthetic peptide encompassing a sequence within the center region of HHV-4 type 2 BSLF2.

**Application Notes:** E: 1:500-1:1,000; WB: 1:100-1:500; IHC: 1:100-1:500



**BSLF2 staining in human liver. Paraffin-embedded human liver is stained with HHV-4 BSLF2 Antibody (Cat. No. 251350) used at 1:200 dilution.**

**Storage:** Store at -20°C. Minimize freeze-thaw cycles. Product is guaranteed one year from the date of shipment.

For research use only, not for diagnostic or therapeutic procedures.