

IFI16 Antibody

Subcategory: Rabbit Polyclonal Antibody

Cat. No.: 200210

Unit: 0.1 mg

Description:

Interferon-gamma inducible protein 16 (IFI16) belongs to the HIN-200 family of transcriptional regulator linked to cell cycle regulation and differentiation by modulating the activities of multiple transcriptional factors, such as p53 and Rb. The HIN-200 (hematopoietic interferon-inducible nuclear antigens with 200 amino acid repeat) family members contain a DNA binding domain, a transcriptional regulatory domain, DAPIN/PAAD domain associated with interferon response and a binding domain for BRCA1. IFI16 may have a role in the regulation of hematopoietic cell differentiation and also be involved in DNA repair since it becomes a component of the DNA repair multi-protein BASC complex after UV-induced DNA damage. IFI16 is strongly induced by gamma interferon in vivo.

Isotype: Rabbit Ig

Applications: E, WB

Species Reactivity: Ch, H, Mk

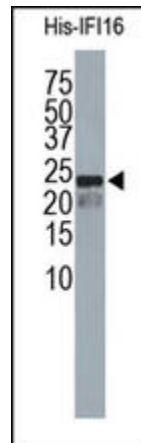
Format: Each vial contains 0.1 mg IgG in 0.1 ml (1 mg/ml) of PBS pH7.4 with 0.09% sodium azide. Antibody was purified by Protein-G affinity chromatography.

Alternate Names: Gamma-interferon-inducible protein I γ -16; Interferon-inducible myeloid differentiation transcriptional activator; IFI16; IFNGIP1

Accession No.: Q16666

Antigen: Recombinant protein encompassing the PAAD domain (aa 6-102) of human IFI16.

Application Notes: E: 1:500-1:1,000; WB: 1:100-1:500



The IFI16 Antibody (Cat. No. 200210) is used in Western blot at 1:5,000 dilution to detect purified recombinant human His-IFI16[6-102].

Storage: Store at -20°C. Minimize freeze-thaw cycles. Product is guaranteed one year from the date of shipment.

For research use only, not for diagnostic or therapeutic procedures.