

## IGF1 Antibody

**Subcategory:** Rabbit Polyclonal Antibody

**Cat. No.:** 250710

**Unit:** 0.1 mg

**Description:**

Insulin-like Growth Factors IGF1 and IGF2 share 76% sequence identity and are 50% related to pro-insulin. They are non-glycosylated, single-chain proteins of 70 and 76 amino acids in length respectively. IGF1 functions as an autocrine regulator of growth in various tissues, whereas IGF2 is found in placenta. Defects in IGF1 are the cause of insulin-like growth factor I deficiency defined by growth retardation, sensorineural deafness and mental retardation.

**Isotype:** Rabbit Ig

**Applications:** E, IHC, WB

**Species Reactivity:** H, M, R

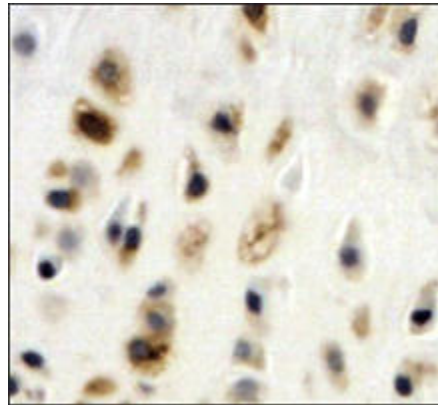
**Format:** Each vial contains 0.1 mg IgG in 0.1 ml (1 mg/ml) of PBS pH7.4 with 0.09% sodium azide. Antibody was purified by Protein-G affinity chromatography.

**Alternate Names:** Insulin-like growth factor I; IGF-I; somatomedin C; mechano growth factor; MGF; IGF1; IBP1

**Accession No.:** P01343

**Antigen:** KLH-conjugated synthetic peptide encompassing a sequence within the N-term region of mouse IGF1.

**Application Notes:** E: 1:500-1:1,000; WB: 1:200-1:500; IHC: 1:200-1:500



**IGF-1 staining in rabbit knee cartilage. Paraffin-embedded rabbit knee cartilage is stained with IGF-1 Antibody (Cat. No. 250710) used at 1:500 dilution.**

**Storage:** Store at -20°C. Minimize freeze-thaw cycles. Product is guaranteed one year from the date of shipment.

**Product Citations:** Malempati S et al. 2012. Journal of Clinical Oncology 30(3) 256-262. Phase I/II Trial and Pharmacokinetic Study of Cixutumumab in Pediatric Patients With Refractory Solid Tumors and Ewing Sarcoma: A Report From the Children's Oncology Group, PMID: 22184397.

For research use only, not for diagnostic or therapeutic procedures.