

IL-10 Antibody

Subcategory: Rabbit Polyclonal Antibody

Cat. No.: 250713

Unit: 0.1 mg

Description:

Interleukin 10 (IL-10) is a cytokine produced primarily by monocytes and to a lesser extent by lymphocytes. IL-10 has pleiotropic effects in immunoregulation and inflammation such as inhibiting synthesis of IFN-gamma, IL-2, IL-3, TNF and GM-CSF produced by activated macrophages and helper T-cells. Defects in IL-10 are a cause of susceptibility to Crohn disease, an inflammatory bowel disease.

Isotype: Rabbit Ig

Applications: E, IHC, WB

Species Reactivity: B, D, H, M, P, Rb, R

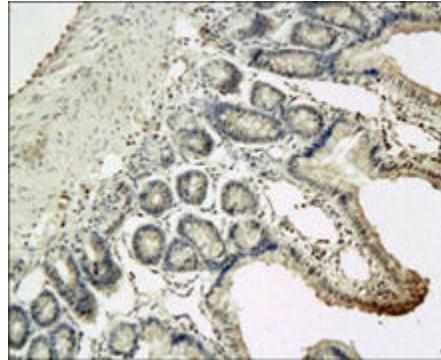
Format: Each vial contains 0.1 mg IgG in 0.1 ml (1 mg/ml) of PBS pH7.4 with 0.09% sodium azide. Antibody was purified by Protein-G affinity chromatography.

Alternate Names: Interleukin-10; IL-10; Cytokine synthesis inhibitory factor; IL10

Accession No.: P22301

Antigen: KLH-conjugated synthetic peptide encompassing a sequence within the center region of human IL-10.

Application Notes: E: 1:500-1:1,000; WB: 1:100-1:500; IHC: 1:200-1:500



IL10 staining in rat colon. Paraffin-embedded rat colon is stained with IL10 Antibody (Cat. No. 250713) used at 1:100 dilution.

Storage: Store at -20°C. Minimize freeze-thaw cycles. Product is guaranteed one year from the date of shipment.

Product Citations: [1] Meadows DN et al. 2014. Hum Mutat. doi: 10.1002/humu.22533. PMID# 24616178. [2] Bennett L et al. 2013. PLoS ONE. 8(10):e76362. PMID# 24204618. [3] Agarwal D et al. 2013. British Journal of Pharmacology. doi:10.1111/boh.12177. PMID# 23516971 [4] Mikael L et al. 2012. Molecular Nutrition and Food Research. doi: 10.1002/mnfr.201200152. PMID# 23112124. [5] Li Y et al. 2012. Arteriosclerosis, Thrombosis, and Vascular Biology. Atherosclerosis. 32(7): 1662-1674. PMID# 22556333. [6] Mikael L et al. 2012. The Journal of Nutrition. 142(3): 411-418. PMID# 22259189. [7] Agarwal D et al. 2011. Medicine. Basic Research In Cardiology. 106(6):1069-1085. PMID# 22124756. [8] Tong H et al. 2011. Endocrine Biology. The Anatomical Record: Advances in Integrative Anatomy and Evolutionary Biology. 294(3):445-452. PMID# 21308995. [9] Shi P et al. 2010. Hypertension. 56(2):297-303. PMID# 20547972.

For research use only, not for diagnostic or therapeutic procedures.