

IL-15 Antibody

Subcategory: Rabbit Polyclonal Antibody

Cat. No.: 254521

Unit: 0.1 mg

Description:

Interleukin-15 (IL-15) is a 114 amino acids cytokine that regulates T and natural killer cell activation and proliferation. Human IL-15 shares approximately 97% and 73% amino acid sequence identity with simian and mouse IL-15, respectively. IL-15 was initially isolated from the simian kidney epithelial cell line CV1/EBNA. The cytokines IL-15 and IL-2 share many biological properties and stimulatory activities (T, B, and NK cells). Both IL-15 and IL-2 stimulate mouse CTLL2 cells. In activated peripheral blood T lymphocytes, IL-2 is highly expressed but the expression of IL-15 is not detectable. There is no sequence homology between IL-15 and IL-2, though IL-15 competes for binding sites with IL-2. Both stimulate the growth of cells through the IL-2 receptor. IL-15 mRNA is expressed in many cell types and tissues including adherent peripheral blood mononuclear cells, fibroblasts, and epithelial cells, monocytes, placenta, and skeletal muscle.

Isotype: Rabbit Ig

Applications: E, IHC, WB

Species Reactivity: H, M, R

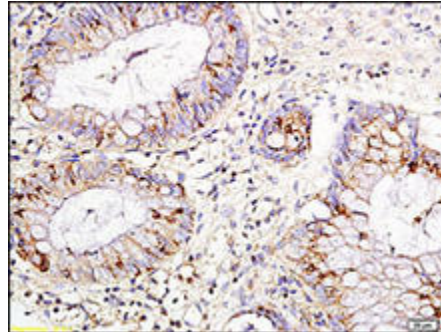
Format: Each vial contains 0.1 mg IgG in 0.1 ml (1 mg/ml) of PBS pH7.4, 0.1 mg/ml BSA, 50% glycerol with 0.09% sodium azide. Antibody was purified by Protein-A and peptide-affinity chromatography.

Alternate Names: IL-15; IL15; Interleukin-15

Accession No.: P40933

Antigen: KLH-conjugated synthetic peptide encompassing a sequence within human IL-15.

Application Notes: E: 1:500-1:1,000; WB: 1:200-1:500; IHC: 1:200-1:500



IL-15 staining in rat colitis. Formalin-fixed paraffin-embedded rat colitis tissue is stained with IL-15 Antibody (Cat. No. 254521) used at 1:200 dilution.

Storage: Store at -20°C. Minimize freeze-thaw cycles. Product is guaranteed one year from the date of shipment.

For research use only, not for diagnostic or therapeutic procedures.