

## IL-6R Antibody

**Subcategory:** Rabbit Polyclonal Antibody

**Cat. No.:** 252201

**Unit:** 0.1 mg

**Description:**

Interleukin-6R binds to IL6 with low affinity, but does not transduce a signal. A soluble IL-6R is produced by both naive and memory CD4 T cells upon TCR activation. The production of IL-6R by activated CD4 T cells is mediated by shedding of the membrane-bound IL-6R, and this process correlates with the expression of the metalloproteinase ADAM17 in these cells. In contrast to CD4 T cells, CD8 T cells do not express ADAM17 and their production of IL-6R is negligible. Thus, during an immune response CD4 T cells are an important source of IL-6R. Production of IL-6R by autoreactive CD4 T cells may contribute to their role in the development of autoimmune disease by conferring IL-6-responsiveness to cells lacking IL-6R such as synoviocytes.

**Isotype:** Rabbit Ig

**Applications:** E, WB, IHC

**Species Reactivity:** H

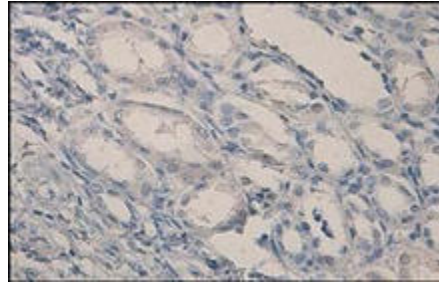
**Format:** Each vial contains 0.1 mg IgG in 0.1 ml (1 mg/ml) of PBS pH7.4 with 0.09% sodium azide. Antibody was purified by immunogen-affinity chromatography.

**Alternate Names:** Interleukin-6 receptor subunit alpha; IL-6 receptor subunit alpha; IL-6R subunit alpha; IL-6R-alpha; IL-6RA ; IL-6R 1; Membrane glycoprotein 80; gp80; CD126

**Accession No.:** P08887

**Antigen:** KLH-conjugated synthetic peptide encompassing a sequence within human IL-6R.

**Application Notes:** E: 1:1,000-1:10,000; WB: 1:100-1:500; IHC: 1:100-1:500



**Interleukin-6 receptor (IL-6R) staining in human kidney: Paraffin-embedded human kidney tissue is stained with IL-6R Antibody (Cat. No. 252201) used at 1:100 dilution.**

**Storage:** Store at -20°C. Minimize freeze-thaw cycles. Product is guaranteed one year from the date of shipment.

For research use only, not for diagnostic or therapeutic procedures.