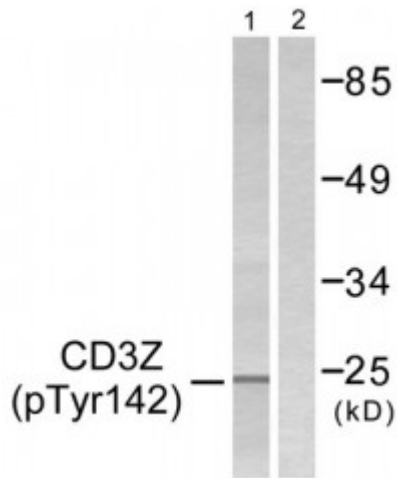


# CD3 zeta (Phospho-Tyr142) Antibody

Catalogue No.: abx012434



Rabbit polyclonal antibody against CD3 zeta protein. Immunogen region is C-terminal. Specificity is as follows for the reactive species: H:Y142, M:Y142, R:Y142.

**Image Legend:** Fig. 1. Western blot analysis of extracts from Jurkat cells, treated with UV (15mins), using CD3 zeta (Phospho-Tyr142) antibody.

**Target:**

CD3 zeta

**Reactivity:**

Human, Mouse, Rat

**Host:**

Rabbit

**Clonality:**

Polyclonal

**Tested Applications:**

WB, ELISA

**Recommended dilutions:**

WB:1:500-1:3000 ELISA:1:1000

**Immunogen:**

The antiserum was produced against synthesized phosphopeptide derived from human CD3 zeta around the phosphorylation site of tyrosine 142 (G-L-YP-Q-G).

**Purification:**

The antibody was affinity-purified from rabbit antiserum by affinity-chromatography using epitope-specific immunogen.

**Conjugation:**

Unconjugated

**Storage:**

Aliquot and store at -20 °C. Avoid repeated freeze/thaw cycles.

**Availability:**

Shipped within 1-2 weeks.

**Note:**

This product is for research use only.