



## Product Data Sheet

---

**Product Name:** Anti-Anti-CD31 (polyclonal)

**Catalog Number:** AS-53332

**Lot Number:** See label on vial

**Product Description:** The antibody is supplied as an epitope affinity purified rabbit IgG, 50 µg in 250 µl (0.2 mg/ml) of 1X PBS (pH 7.4) containing 0.05% sodium azide.

**Immunogen:** Rabbit anti-CD31 polyclonal antibodies were raised against a synthetic peptide corresponding to C-terminus of mouse CD31.  
Molecular Weight: 100-130 kDa

**Species Reactivity:** Species reactivity includes human, while others remain untested.

**Application Notes:** The following concentration ranges are recommended starting points for this product. Optimal working concentrations should be determined by the investigator for specific applications.

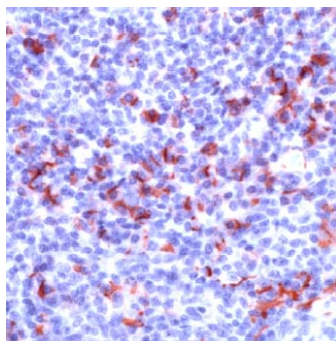
WB: 0.5-2.0 µg/ml

IHC (Formalin/paraffin): 1:50 for 10 min at room temperature (RT)

Staining of formalin-fixed tissues requires boiling tissue sections in 10 mM citrate buffer, pH 6.0, for 10 min followed by cooling at RT for 20 min.

Positive Control: Jurkat and Raji cells. Tonsil

Cellular Localization: Cell membrane



Human tonsil stained with Anti-CD 31 antibody

**Background:** CD31 is a glycoprotein expressed on endothelial cells and in platelets. It is known to be involved in cell signaling and cell adhesion.

**Product Citations:**

1. [Kaneko, H. et al. \(2011\). Resveratrol prevents the development of abdominal aortic aneurysm through attenuation of inflammation, oxidative stress, and neovascularization. Atherosclerosis 10.1016/j.atherosclerosis.2011.03.042.](#)

**Storage:** Store at 2-8 °C for up to one year. Avoid repeated freezing and thawing.

This product is for *in vitro* research use only.