

product **AS11 1633**

EF1A | elongation factor 1-alpha / EF-1-alpha

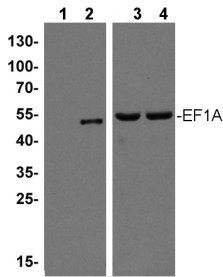
product information

background	EF1A (elongation factor 1-alpha) belongs to the GTP-binding elongation factor family and is localized in the cytoplasm. It is an essential enzyme in elongation phase of protein synthesis. There are four genes encoding EF1A in <i>Arabidopsis</i> , sequences of genes 1,2 and 3 are identical. Synonymes: eEF-1A.
immunogen	full length, recombinant EF1A of <i>Arabidopsis thaliana</i> P13905
antibody format	rabbit polyclonal serum lyophilized
quantity	200 µl for reconstitution add 200 µl, of sterile water.
storage	store lyophilized/reconstituted at -20 °C; once reconstituted make aliquots to avoid repeated freeze-thaw cycles. Please, remember to spin tubes briefly prior to opening them to avoid any losses that might occur from lyophilized material adhering to the cap or sides of the tubes.
tested applications	western blot (WB)
related products	AS10 679 eEF1B-alpha2 elongation factor 1B-alpha 2 AS10 678 eEF1B-alpha1 an 2 elongation factor 1B-alpha 1 and 2 AS10 677 eEF1B-beta1 and 2 elongation factor 1-beta1 and 1-beta2 AS07 265 eEF1b elongation factor eEF1b-beta protein AS10 676 eEF1B-gamma1 and 2 elongation factor 1-gamma 1 and 2
additional information	to be added when available

application information

recommended dilution	1 : 1000 with standard ECL (WB)
expected apparent MW	49.5 kDa
confirmed reactivity	<i>Arabidopsis thaliana</i>
predicted reactivity	dicots including: <i>Brassica napus</i> , <i>Solanum tuberosum</i> , <i>Sorghum bicolor</i> , monocots including: <i>Oryza sativa</i> , <i>Zea mays</i> , trees: <i>Populus trichocarpa</i> , <i>Picea sitchensis</i>
not reactive in	recombinant wheat EF1A
additional information	to be added when available
selected references	to be added when available. Antibody released in February 2011.

application example



10 µg total protein extracted from 15 day old *Arabidopsis thaliana* seedlings that were either kept at 22°C (**3**) or heat treated at 38°C for 2 hours prior to protein extraction (**4**). As positive control 10 ng of recombinant AtEF1A (**2**) were separated side by side with the plant samples on 10-15 % gradient SDS-PAGE and blotted to nitrocellulose (Bio-rad). Blots were blocked following transfer with 5% low fat milk in low salt buffer for 1h at room temperature with agitation. Blots were incubated in the primary antibody at a dilution of 1: 1000 for O/N 4°C with agitation in the blocking solution. The primary antibody solution was removed and the blot was rinsed briefly twice, then washed 4 times for 15 min each at room temperature with agitation using low salt buffer. Blots were incubated in secondary antibody, anti-rabbit IgG horse radish peroxides conjugated, from Agrisera, [AS09 602](#), diluted to 1:35 000 for 1h at room temperature with agitation then washed as above and treated with ECL detection reagent according to the manufacturer's instructions. Exposure time was 5 seconds.

Lane (**1**) with no signal: recombinant *Triticum* spp. EF1A.

Courtesy Dr. Eman Basha, Arizona State University