

Human PLA2G2D / Phospholipase A2 IID Protein (Fc Tag)

Catalog Number: 12479-H02H



Sino Biological Inc.
Biological Solution Specialist

General Information

Gene Name Synonym:

PLA2IID; sPLA2-IID; sPLA2S; SPLASH; mGIID; Splash

Protein Construction:

A DNA sequence encoding the human PLA2G2D (Q9UNK4) (Met1-Cys145) was expressed with the Fc region of human IgG1 at the C-terminus.

Source: Human

Expression Host: Human Cells

QC Testing

Purity: > 85 % as determined by SDS-PAGE

Endotoxin:

< 1.0 EU per µg of the protein as determined by the LAL method

Stability:

Samples are stable for up to twelve months from date of receipt at -70 °C

Predicted N terminal: Gly 21

Molecular Mass:

The recombinant human PLA2G2D/Fc is a disulfide-linked homodimer. The reduced monomer comprises 366 amino acids and has a predicted molecular mass of 41.5 kDa. The apparent molecular mass of the protein is approximately 44 kDa in SDS-PAGE under reducing conditions.

Formulation:

Lyophilized from sterile PBS, pH 7.4.

Normally 5 % - 8 % trehalose, mannitol and 0.01% Tween80 are added as protectants before lyophilization. Specific concentrations are included in the hardcopy of COA. Please contact us for any concerns or special requirements.

Usage Guide

Storage:

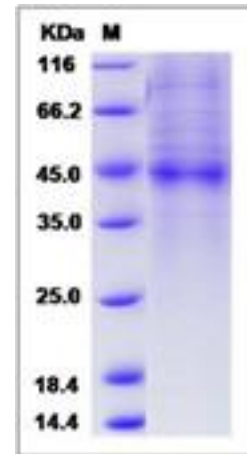
Store it under sterile conditions at -20°C to -80°C upon receiving. Recommend to aliquot the protein into smaller quantities for optimal storage.

Avoid repeated freeze-thaw cycles.

Reconstitution:

Detailed reconstitution instructions are sent along with the products.

SDS-PAGE:



Manufactured By Sino Biological Inc., FOR RESEARCH USE ONLY. NOT FOR USE IN HUMANS.

Fax :+86-10-51029969 • Tel:+86-400-890-9989 • <http://www.sinobiological.com>