

# Human BPIFA2 / C20orf70 Protein (Fc Tag)



**Sino Biological Inc.**  
Biological Solution Specialist

Catalog Number: 13915-H02H

## General Information

### Gene Name Synonym:

bA49G10.1; C20orf70; PSP; SPLUNC2; Bpifa2e; Psp

### Protein Construction:

A DNA sequence encoding the human C20orf70 (Q96DR5) (Met1-Ile249) was expressed, fused with the Fc region of human IgG1 at the C-terminus.

**Source:** Human

**Expression Host:** Human Cells

## QC Testing

**Purity:** > 94 % as determined by SDS-PAGE

### Endotoxin:

< 1.0 EU per µg of the protein as determined by the LAL method

### Stability:

Samples are stable for up to twelve months from date of receipt at -70 °C

**Predicted N terminal:** Glu 19

### Molecular Mass:

The recombinant human C20orf70/Fc is a disulfide-linked homodimer. The reduced monomer comprises 470 amino acids and has a predicted molecular mass of 51.8 kDa. The apparent molecular mass of the protein is approximately 59 kDa in SDS-PAGE under reducing conditions.

### Formulation:

Lyophilized from sterile PBS, pH 7.4

Normally 5 % - 8 % trehalose, mannitol and 0.01% Tween80 are added as protectants before lyophilization. Specific concentrations are included in the hardcopy of COA. Please contact us for any concerns or special requirements.

## Usage Guide

### Storage:

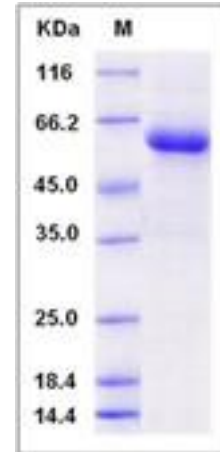
Store it under sterile conditions at -20°C to -80°C upon receiving. Recommend to aliquot the protein into smaller quantities for optimal storage.

**Avoid repeated freeze-thaw cycles.**

### Reconstitution:

Detailed reconstitution instructions are sent along with the products.

## SDS-PAGE:



## Protein Description

C20orf70 belongs to the BPI/LBP/Plunc superfamily, Plunc family. PLUNC family is comprised by mucosal secretory proteins that are predicted to be structurally similar to lipid-binding and host-defense proteins including bactericidal/permeability-increasing protein and lipopolysaccharide-binding protein. C20orf70 can be detected in submandibular gland. C20orf70 gene contains 9 distinct gt-ag introns. Transcription produces 6 different mRNAs, 4 alternatively spliced variants and 2 unspliced forms. There are 2 probable alternative promoters, 3 non overlapping alternative last exons and 4 validated alternative polyadenylation sites. The mRNAs appear to differ by truncation of the 3' end. 80 bp of this gene are antisense to spliced gene glopa, raising the possibility of regulated alternate expression. C20orf70 is expected to have molecular function (lipid binding) and to localize in extracellular region. It is a salivary protein of unknown function.

## References

- 1.Lamesch P, *et al.* (2007) hORFeome v3.1: a resource of human open reading frames representing over 10,000 human genes. *Genomics*. 89(3):307-15.
- 2.Vargas PA, *et al.* (2008) Expression of PLUNC family members in benign and malignant salivary gland tumours. *Oral Dis*. 14(7):613-9.
- 3.Bingle L, *et al.* (2009) Characterisation and expression of SPLUNC2, the human orthologue of rodent parotid secretory protein. *Histochem Cell Biol*. 132(3):339-49.

Manufactured By Sino Biological Inc., FOR RESEARCH USE ONLY. NOT FOR USE IN HUMANS.

Fax :+86-10-51029969 ● Tel:+86-400-890-9989 ● <http://www.sinobiological.com>