

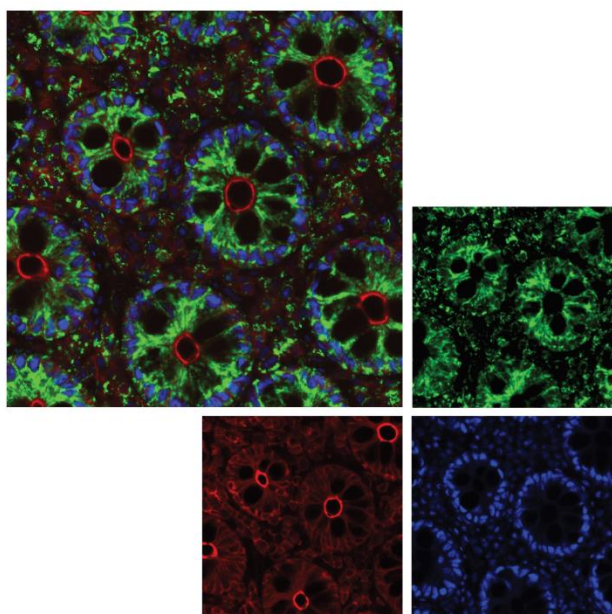


ATLAS ANTIBODIES



PrecisA Monoclonals

- Precise, Accurate and Targeted



Colon tissue studied with ICC-IF.
Multiplex staining of mitochondria (green),
nuclei (blue) and plasma membranes (red)

Triple A Polyclonals

-the Heart of the Human Protein Atlas

- Covers 75% of the human proteome
- Validated for IHC, WB, ICC-IF
- 500 IHC images for each IHC-antibody on the Human Protein Atlas
- Several epitopes for high sensitivity



Number 1 in IHC

1. 瑞典原裝進口 
2. 超高品質抗體
3. 病理部指定用廠牌

官方授權代理

 **abs**® 亞旭生物科技股份有限公司
ASIA BIOSCIENCE CO., LTD.

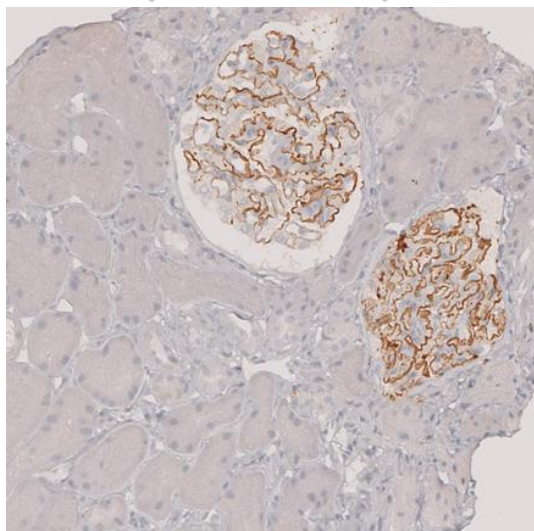


(02)8866-3366

Fax (02)2833-1789

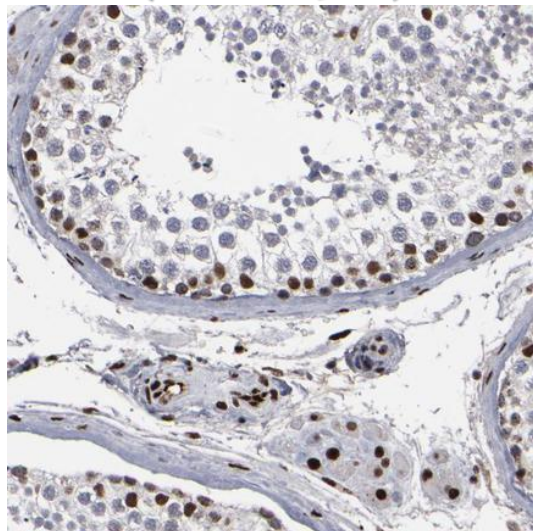
www.abscience.com.tw

Anti-PLA2R1 Antibody (HPA012657)



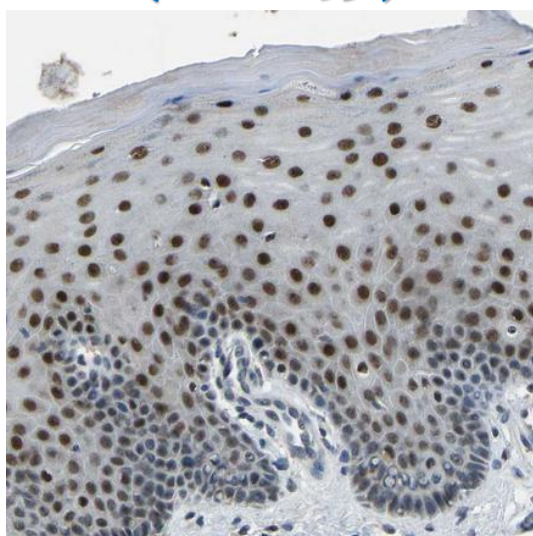
Immunohistochemical staining of human kidney (idiopathic membranous nephropathy) shows strong membranous positivity in cells in glomeruli.

Anti-ATRAX Antibody (HPA001906)



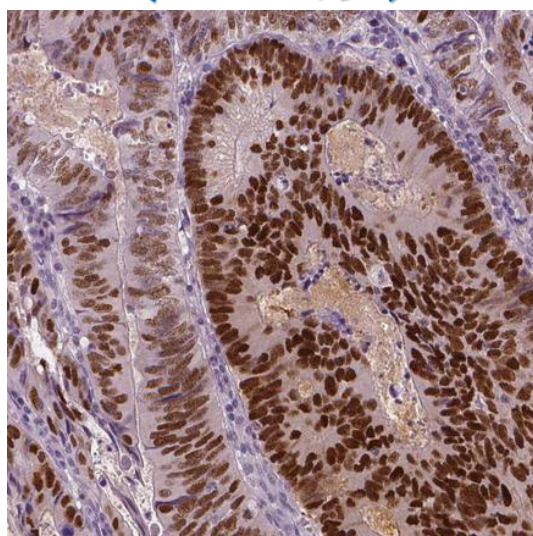
Immunohistochemical staining of human testis shows moderate to strong nuclear positivity in a subset of cells in seminiferous ducts and Leydig cells.

Anti-FOS Antibody (HPA018531)



Immunohistochemical staining of human cervix, uterine shows moderate to strong nuclear positivity in squamous epithelial cells.

Anti-SOX9 Antibody (HPA001758)



Immunohistochemical staining of human colorectal cancer shows moderate to strong nuclear positivity in tumor cells.

<https://www.proteinatlas.org/>

2018. 02. 13 前購買就送電影票或超商商品卡

亞旭生技(02)8866-3366

更多資訊請洽 ATLAS 官方網站或電洽當區業務