

# DDX3 Antibody

Rabbit Polyclonal

Antigen Affinity Purified

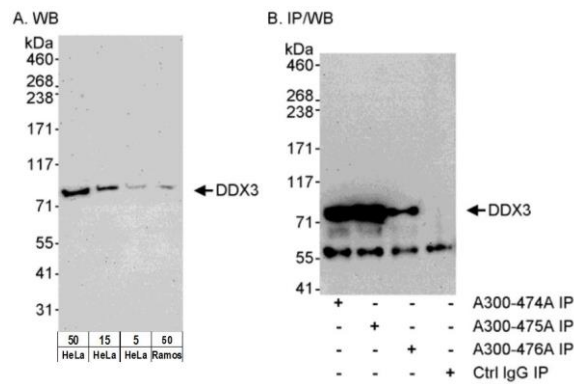
Protein ID NP\_001347.2

Catalog No. A300-475A

GeneID 1654



<b>APPLICATIONS</b>	WB, IP
<b>SPECIES REACTIVITY</b>	Human
<b>PRESUMED REACTIVITY</b>	Based on 100% sequence identity, this antibody is predicted to react with Mouse
<b>ISOTYPE</b>	IgG
<b>AMOUNT</b>	100 µl at 1 mg/ml
<b>STORAGE/SHELF LIFE</b>	2 - 8° C / 1 year from date of receipt
<b>PHYSICAL STATE</b>	Liquid
<b>BUFFER</b>	Tris-citrate/phosphate buffer, pH 7 to 8 containing 0.09% Sodium Azide
<b>ORIGIN</b>	USA
<b>PRODUCTION PROCEDURES</b>	Antibody was affinity purified using an epitope specific to DDX3 immobilized on solid support.  The epitope recognized by A300-475A maps to a region between residues 550 and 600 of human DEAD (Asp-Glu-Ala-Asp) box polypeptide 3 using the numbering given in entry NP_001347.2 (GeneID 1654).  Immunoglobulin concentration was determined by extinction coefficient: absorbance at 280 nm of 1.4 equals 1.0 mg of IgG.
<b>APPLICATIONS</b>	Centrifuge tube to remove product from lid. Optimal working dilutions should be determined experimentally by the investigator. Prepare working dilution immediately before use.  Western Blot                      1:5,000 - 1:15,000  Immunoprecipitation          2 - 5 µg/mg lysate
<b>APPLICATION NOTES</b>	Western blot of immunoprecipitates performed using ReliaBLOT® Reagents (Cat. No. WB120) and 4-8% SDS-PAGE. Western blot of lysates performed using standard western blot reagents and 4-8% SDS-PAGE.
<b>ADDITIONAL INFO</b>	<a href="http://www.bethyl.com/product/A300-475A">http://www.bethyl.com/product/A300-475A</a>  Use the link above to view SDS, a current list of citations, and other product specific information.



**Detection of DDX3 by western blot and immunoprecipitation.** *Samples:* A. Whole cell lysate from HeLa (5, 15 and 50 µg) and Ramos (50 µg) cells. B. Whole cell lysate (1 mg/IP; 1/4 of IP loaded/lane) from HeLa cells. *Antibodies:* Affinity purified rabbit anti-DDX3 antibody BL1650 (Cat. No. A300-475A) used at 0.04 µg/ml (A) and 0.1 µg/ml (B) for western blot and at 3 µg/mg lysate for IP (B). DDX3 was also immunoprecipitated using rabbit anti-DDX3 antibodies Cat. No. A300-474A and A300-476A at 3 µg/mg lysate. *Detection:* Chemiluminescence with exposure times of 3 minutes (A and B).