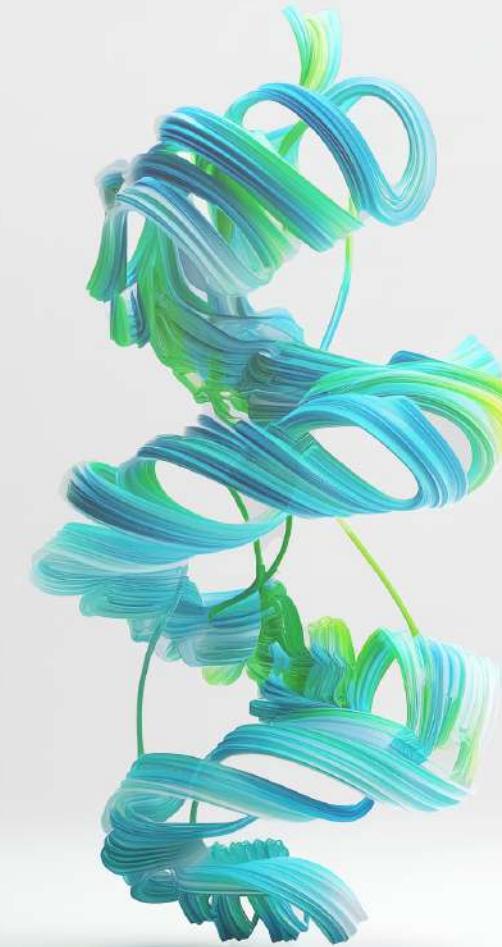


Catalog No.	Product Name	Performance Advantages	Pack Size
<b>ELISA Kits</b>			
<i>Human Interferon ELISAs</i>			
41100-1, -2	<b>VeriKine Human IFN-Alpha ELISA</b> Assay Range: 12.5 - 500 pg/ml (extended: 156 - 5,000 pg/ml)	routine screening of IFN-alpha	1 x 96-well plate 5 x 96-well plate
41115-1	<b>VeriKine-HS Human IFN-Alpha All-Subtype ELISA</b> Assay Range: 1.95 - 125 pg/ml	all-subtype high-sensitivity detection in complex matrices	1 x 96-well plate
41135-1	<b>VeriKine-HS Human IFN-Alpha TCM ELISA</b> Assay Range: 1.95 - 125 pg/ml	all-subtype high-sensitivity detection in tissue culture media	1 x 96-well plate
41410-1, -2	<b>VeriKine Human IFN-Beta ELISA</b> Assay Range: 50 - 4,000 pg/ml	routine screening of IFN-beta	1 x 96-well plate 5 x 96-well plate
41415-1	<b>VeriKine-HS Human IFN-Beta ELISA</b> Assay Range: 1.2 - 150 pg/ml	high-sensitivity detection in complex matrices	1 x 96-well plate
41435-1	<b>VeriKine-HS Human IFN-Beta TCM ELISA</b> Assay Range: 2.34 - 150 pg/ml	high-sensitivity detection in tissue culture media	1 x 96-well plate
<i>Human Interleukin ELISAs</i>			
41701-1	<b>VeriKine-HS Human IL-22 ELISA</b> Assay Range: 0.78 - 50 pg/ml	near-100% quantification in healthy and disease samples	1 x 96-well plate
41702-1	<b>VeriKine-HS Total Human IL-15 ELISA</b> Assay Range: 0.51 - 32.8 pg/ml	accurate quantification of free IL-15 and IL-15/IL15-R $\alpha$ complex	1 x 96-well plate
<i>Mouse &amp; Non-Human Primate Interferon ELISAs</i>			
42115-1	<b>VeriKine-HS Mouse IFN-Alpha All-Subtype ELISA</b> Assay Range: 2.38 - 152 pg/ml	all-subtype high-sensitivity detection in complex matrices	1 x 96-well plate
42120-1	<b>VeriKine Mouse IFN-Alpha ELISA</b> Assay Range: 12.5 - 400 pg/ml	routine screening of IFN-alpha	1 x 96-well plate
42400-1, -2	<b>VeriKine Mouse IFN-Beta ELISA</b> Assay Range: 15.6 - 1,000 pg/ml	routine screening of IFN-beta	1 x 96-well plate 5 x 96-well plate
42410-1, -2	<b>VeriKine-HS Mouse IFN-Beta ELISA</b> Assay Range: 0.94 - 60 pg/ml	high-sensitivity detection in complex matrices	1 x 96-well plate 5 x 96-well plate
46100-1	<b>VeriKine Cynomolgus/Rhesus IFN-Alpha ELISA</b> Assay Range: 25 - 1,600 pg/ml	extended-range detection in complex matrices	1 x 96-well plate
46415-1	<b>VeriKine Cynomolgus IFN-Beta ELISA</b> Assay Range: 5.47 - 350 pg/ml	enhanced-sensitivity detection in complex matrices	1 x 96-well plate
<b>Recombinant Proteins</b>			
11100-1	Human IFN-Alpha 2a (Alpha A) Protein	widely studied, clinically approved	5 x 10 <sup>6</sup> units
11105-1	Human IFN-Alpha 2b (Alpha 2) Protein	widely studied, clinically approved	1 x 10 <sup>6</sup> units
11200-1, -2	Universal™ Type I IFN Protein	active in all mammalian cells tested	1 x 10 <sup>6</sup> units, 1 x 10 <sup>6</sup> units
11415-1	Human IFN-Beta Protein, mammalian expressed		1 x 10 <sup>6</sup> units
12100-1	Mouse IFN-Alpha A Protein		1 x 10 <sup>6</sup> units
12400-1	Mouse IFN-Beta Protein		1 x 10 <sup>6</sup> units
<b>Antibodies</b>			
21385-1	Anti-Human IFN-Alpha/Beta Receptor 2 Monoclonal Antibody, Clone MMHAR-2		50 $\mu$ g
21886-1	Anti-Human IFN-Lambda Receptor 1 Monoclonal Antibody, Clone HLR14		50 $\mu$ g
22100-1	Anti-Mouse IFN-Alpha Monoclonal Antibody, Clone RMMA-1		250 $\mu$ g
22400-1	Anti-Mouse IFN-Beta Monoclonal Antibody, Clone RMMB-1		250 $\mu$ g
39000-1	Human Type I IFN Neutralizing Antibody Mixture	unique product for comprehensive neutralization	0.2 ml



# Turn Real-World Challenges into Reliable Results

35 YEARS OF CYTOKINE RESEARCH EXCELLENCE



# ELISA Kits that Overcome Real-World Assay Limitations

Measuring cytokines with ELISAs can be challenging in real-world conditions—where analyte levels are often extremely low, similar proteins cross-react, and testing samples in complex matrices like serum or plasma can lead to erroneous results. PBL Assay Science ELISA kits are designed to overcome these obstacles, delivering accurate and reproducible results you can rely upon.

- HIGH SENSITIVITY**  
Enables low-abundance cytokine detection for better biological insights.
- EXCEPTIONAL SPECIFICITY**  
Targets endogenous proteins to eliminate false data.
- SUPERIOR MATRIX TOLERANCE**  
Ensures accurate results from real-world healthy and disease samples.

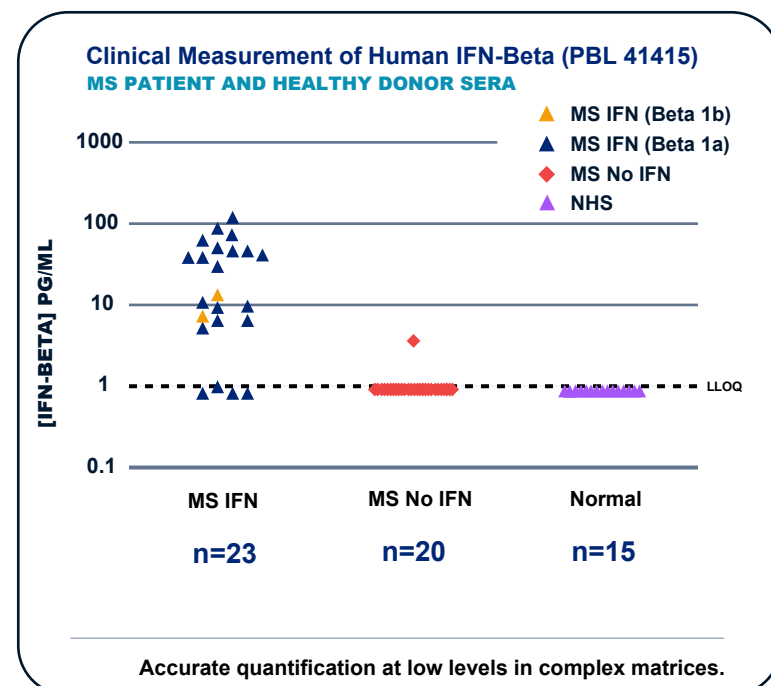
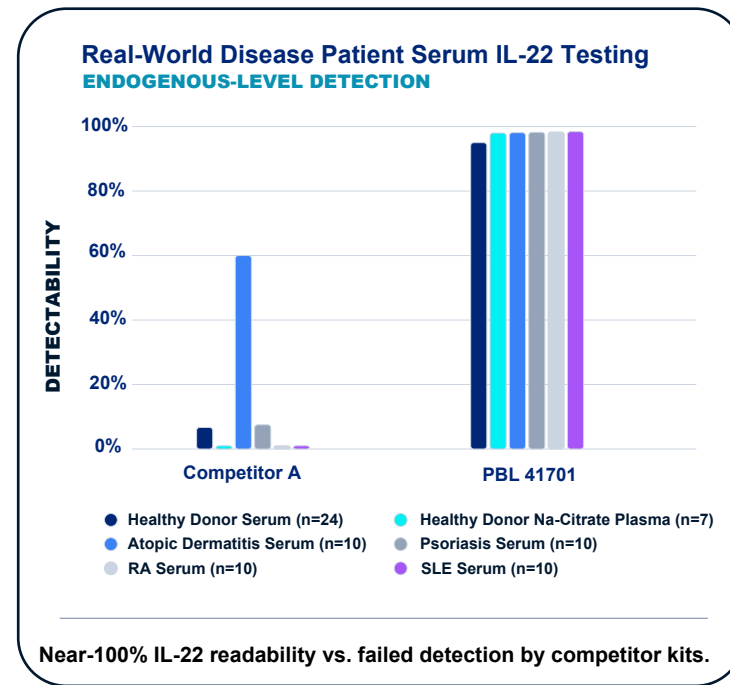
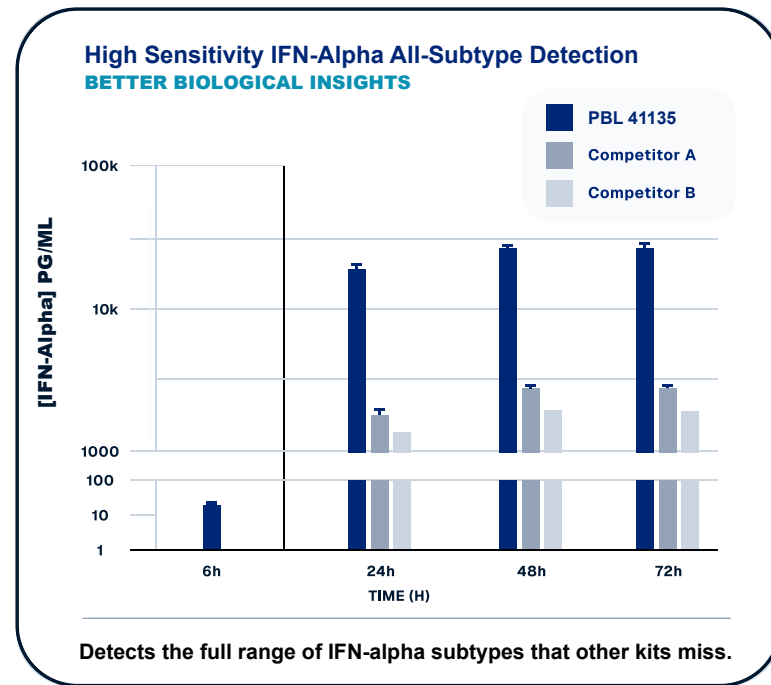
# Proteins & Antibodies for Translational Research

Type I interferon researchers often face practical challenges in the lab, including variability in protein activity among lots, inaccurate dosing from mass-based measurements, and cross-reactivity among subtypes. PBL Assay Science addresses these issues by providing lot-tested proteins in activity units and validated antibodies to ensure dependable results.

**Lot-Specific Bioactivity Testing** reduces variability, ensuring consistent performance and reproducible results across experiments.

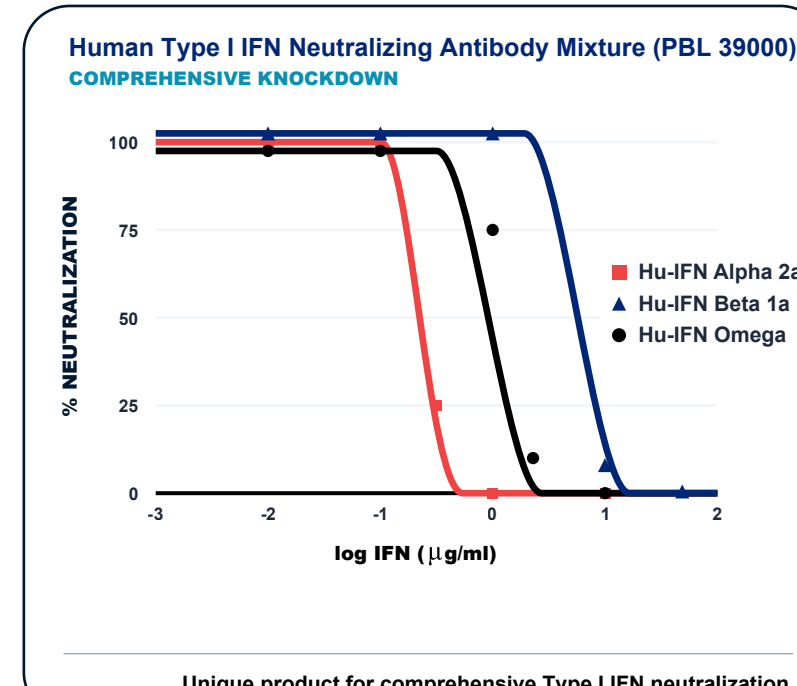
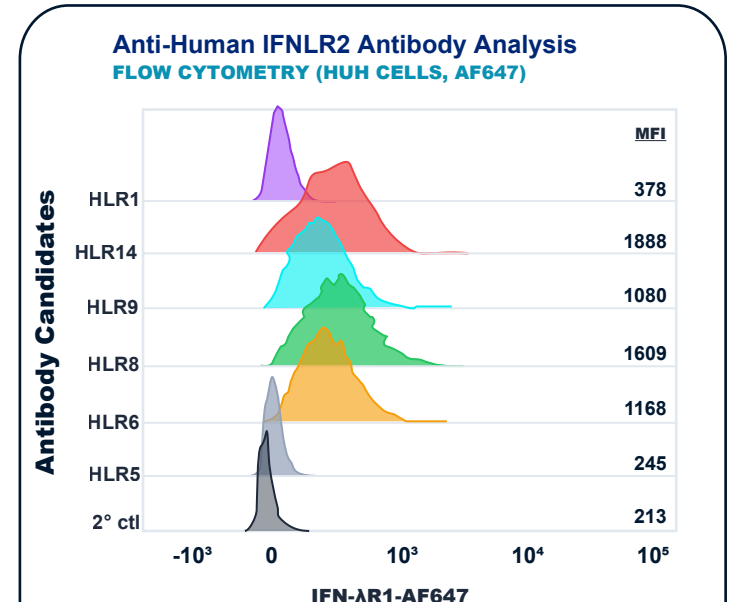
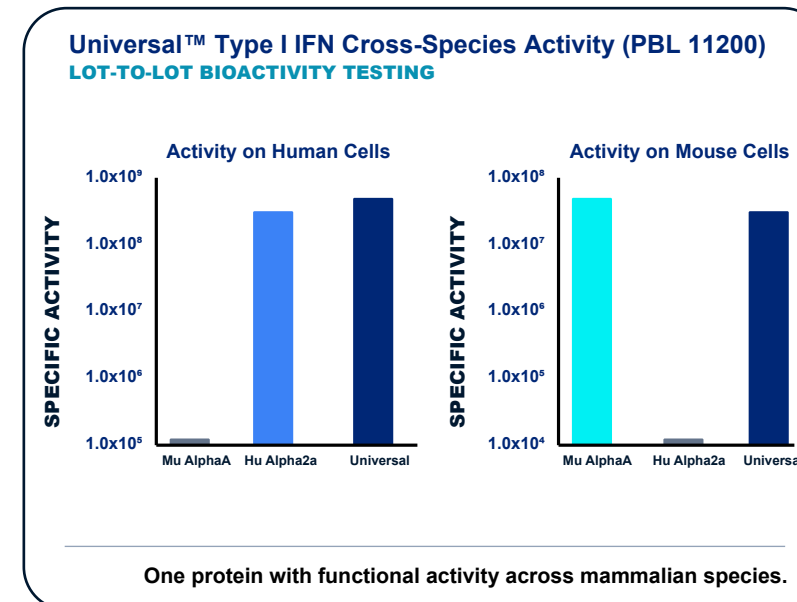
**Functional Proteins** are provided in activity units rather than mass, allowing researchers to dose based on biological potency instead of weight—critical for accurate functional studies.

**Highly Specific Antibodies** designed for all-subtype IFN alpha neutralization and Type I IFN signal knockdown.



ELISA	LLOQ (pg/ml)	Specificity	Endogenous Sample Measurement
Human IFN-Alpha PBL 41115	1.92	All 12 Human IFN-Alpha Subtypes	Healthy donor, Lupus, Influenza, COVID-19 sera
Competitor A	15.6	N/A	N/A
Competitor B #1	4.68	IFN-Alpha 1	No data shown on healthy or patient sera
Competitor B #2	187.5	IFN-Alpha 2	No data shown on healthy or patient sera
Human IFN-Beta PBL 41415	1.2	No interference from sIFNAR2	Validated for autoimmune sera & therapeutics
Competitor A	7.8	Interference in presence of sIFNAR2	Cell/Tissue culture Supernatant
Competitor B	9.38	N/A	No data shown on healthy or patient sera
Human IL-22 PBL 41701	0.78	Free IL-22	Near 100% endogenous IL-22 detectability
Competitor A	15.6	N/A	Poor endogenous IL-22 detectability
Competitor B	13.12	N/A	No data shown on healthy or patient sera
Human IL-15 PBL 41702	0.51	Both free IL-15 & IL-15/IL-15R $\alpha$ complex	100% healthy donor serum detectability
Competitor A	15.6	N/A	Poor endogenous IL-15/IL-15R $\alpha$ detectability
Competitor B	3.9	N/A	Poor endogenous IL-15/IL-15R $\alpha$ detectability

PBL ELISAs are designed for real-world use.



PBL collaborated on the development of a fit-for-purpose Human IFN-lambda Receptor Chain 1 antibody in response to customer requests (de Weerd NA, et al. JICR 2023;43(9):403-413).

Trust your data and accelerate discoveries in basic and translational research with PBL Assay Science products.